



Road Traffic
Management Corporation

State of Road Safety Report

January – December 2019



transport

Department:
Transport
REPUBLIC OF SOUTH AFRICA

Table of contents

Table of contents	ii
List of Figures	5
List of acronyms and abbreviations	7
1. OBJECTIVE OF THE REPORT	8
2. EXECUTIVE SUMMARY	9
SECTION A	10
1. INTRODUCTION	10
2. METHODOLOGY	10
3. ROAD FATAL CRASHES	12
4. ROAD FATALITIES ANALYSIS	21
5. MAJOR CRASHES	27
1. INTRODUCTION	31

List of Tables

Table 1: Number of fatal crashes per province	12
Table 2: Percentage distribution of Fatal Crashes per day of week for the	13
Table 3: Comparison of fatalities per province for the two years 2018 and 2019	21
Table 4: Number of registered vehicles per type	32
Table 5: Number of registered vehicles per province	33
Table 6: Estimated mid-month human population per province - million	36
Table 7: Average number of persons per vehicle (excluding trucks, other, unknown and towed vehicles)	36
Table 8: Percentage improvement in mobility per province.....	37
Table 9: Average number of persons per "heavy" passenger transport vehicle (buses and minibuses).....	39
Table 10: Percentage improvement on average number of persons per "heavy" passenger transport vehicles (buses and minibuses)	40
Table 11: Average number of public transport vehicles (buses and minibuses) per 10,000 human population	41
Table 12: Number of un-roadworthy, un-licenced vehicles or both	42
Table 13: Number of vehicles that are un-roadworthy or un-licenced or both	43
Table 14: Number of un-roadworthy vehicles	44
Table 15: Number of un-roadworthy vehicles	45
Table 16: Number of un-licenced vehicles	47
Table 17: Number of un-licenced vehicles	48
Table 18: Number of learner licences issued.....	50
Table 19: Number of learners licences issued per province.....	51
Table 20: Number of driving licences issued	52
Table 21: Number and percentage of driving licences issued per category.....	53

Table 22: Number of driving licences issued per province.....	54
Table 23: Number of driving licences cards issued and expired per province 2018....	55
Table 24: Number of PrDP's issued.....	56
Table 25: Number of professional driving permits (PrDP's) issued per province.....	57
Table 26: Number of professional driving permits (PrDP's) issued and expired per province 2018	58

List of Figures

Figure 1: Percentage distribution of fatal crashes for the two quarters.....	13
Figure 2: Percentage distribution of fatal crashes per day of week	14
Figure 3: % distribution of fatal crashes per time of day for two years 2018 and 2019	14
Figure 4: Percentage distribution of fatal crashes per crash type.....	15
Figure 5: Percentage distribution of vehicle type.....	16
Figure 6: Comparison of contributory factors for 2018 and 2019	17
Figure 7: Percentage distribution of human factors.....	18
Figure 8: Percentage distribution of road and environmental factors.....	19
Figure 9: Percentage distribution for vehicle factor.....	20
Figure 10: Percentage distribution of fatalities per road user	22
Figure 11: Percentage distribution of fatalities per gender.....	22
Figure 12: Percentage distribution of fatalities per race.....	23
Figure 13: Percentage distribution of fatalities per age for drivers	24
Figure 14: Percentage distribution of fatalities per age for passengers	25
Figure 15: Percentage distribution of fatalities per age for pedestrians	25
Figure 16: Percentage distribution of fatalities per age for cyclists.....	26
Figure 17: Number of major crashes, fatalities and injuries	27
Figure 18: Major crashes per crash types.....	28
Figure 19: Vehicles involved in major crashes.....	29
Figure 20: Percentage distribution of the contributory	30
Figure 21: Percentage Annual Growth in Vehicles.....	33
Figure 22: Percentage Annual Growth in Vehicle Population.....	34
Figure 23: Percentage Annual Growth in Vehicle Population.....	34

Figure 24: Percentage Vehicles Registered per Province.....	35
Figure 25: Average number of persons per vehicle (excluding trucks, other and trailer)	37
Figure 26: Percentage improvement in mobility of persons.....	38
Figure 27: Average number of persons per " heavy vehicles" (buses and minibuses)	39
Figure 28: Average number of persons per " heavy vehicles" (buses and minibuses)	40
Figure 29: Number of buses and minibuses / 10,000 human population.....	41
Figure 30: Percentage change in number of vehicles un-roadworthy or un-licensed or both	43
Figure 31: Percentage of un-roadworthy vehicles	44
Figure 32: Percentage change in number of vehicles that are un-roadworthy per province	45
Figure 33: Percentage of un-roadworthy vehicles.....	46
Figure 34: Percentage of un-licenced vehicles.....	48
Figure 35: Percentage change in number of vehicle that are un-licensed per province	49
Figure 36: Percentage of un-licensed vehicles.....	49
Figure 37: Number of learner licenses issues.....	50
Figure 38: Percentage change in learner licenses issued per province.....	51
Figure 39: Number of driving licenses Issued.....	53
Figure 40: Percentage change in driving licenses issued.....	54
Figure 41: Percentage expired driving license cards	55
Figure 42: Number of PrDP's issued	56
Figure 43: Percentage in PrDP's issued	57
Figure 44: Percentage expired professional driving permits	58

List of acronyms and abbreviations

CHOCOR	:	CULPABLE HOMICIDE CRIME: OBSERVATION REPORT
EC	:	EASTERN CAPE
GA	:	GAUTENG
FS	:	FREE STATE
LI	:	LIMPOPO
MP	:	MPUMALANGA
NC	:	NORTHERN CAPE
NW	:	NORTH WEST
WC	:	WESTERN CAPE
KZN	:	KWAZULU NATAL
SAPS	:	SOUTH AFRICAN POLICE SERVICE
NATIS	:	ELECTRONIC NATIONAL TRAFFIC INFORMATION SYSTEM
NREP	:	NATIONAL ROLLOUT ENFORCEMENT PLAN

1. OBJECTIVE OF THE REPORT

This report is aimed at achieving the following objectives:

- To provide road traffic fatal crashes and fatalities statistics based on the Culpable Homicide Crash: Observation Report (CHoCOR) Forms; and
- To present statistics on registered vehicles, un-roadworthy vehicles, un-licenced vehicles, driving licence and professional driving permits issued.

2. EXECUTIVE SUMMARY

The report seeks to provide the road crash statistics. The performance is for the period between January – December 2019. The performance per each focus areas has been provided below:

Road Crashes Data

A total number of 12 503 fatalities were recorded for the period January – December 2019. That resulted in a decrease of 3% from 2018. The most affected road users were pedestrians and passengers.

A total number of one-hundred and eight (108) major crashes were reported and investigated during the period under review. Six-hundred and eighty-eight (688) persons were killed and seven-hundred and seventy-four (774) persons sustained injuries in major crashes

Vehicle and driver population

The number of registered vehicles increased by 238 650 (1.91%) from 12 462 979 on 31 December 2018 to 12 701 629 vehicles on 31 December 2019.

The number of learner driving licences issued decreased by 1 759 (0.15%) from 1 171 788 on 31 December 2018 to 1 170 029 on 31 December 2019. The number of driving licences issued increased by 491 744 (3.77%) from 13 055 317 on 31 December 2018 to 13 547 061 as of 31 December 2019.

SECTION A

1. INTRODUCTION

This report is based on information about fatal crashes that were reported to police stations between January and December 2019 using the CHoCOR Form. In addition, the report includes information about registered vehicles, un-roadworthy and un-licenced vehicles, driving licence and professional driving permits issued from the National Traffic Information System (NaTIS). Furthermore, it includes information about population growth using the 2019 mid-year population estimates from Statistics South Africa (Stats SA).

2. METHODOLOGY

2.2 Road crash data collection methodology

The Culpable Homicide Crash Observation Report (CHoCOR) form is used to collect fatal crashes data on daily basis. South African Police Service (SAPS) is the primary source of the fatal crashes data. SAPS provide the Corporation with a list of all recorded fatal crashes (CAS list) and further to this the Corporation receive the CHoCOR forms from various police stations. Road Traffic Management Corporation captures, processes and verifies the data to compile a report.

2.2 Crash Data Flow

Data is collected through the CHoCOR forms. The forms are then submitted to the Corporation either by fax, email or through the phone.

2.2 Data processing

The data is captured, processed and verified for the compilation of the consolidated statistical report. There is a continuous engagement with provinces for validation purpose.

2.2 Limitations

The road traffic information contained in the report is mainly based on the fatal crashes only. There is still a need for in-depth research to be conducted to collect scientific base facts to complement the administrative data.

2.2 Instruments

The Culpable Homicide Crash Observation Report (CHoCOR) forms are being used by Road Traffic Information unit to record fatality data on daily basis.

3. ROAD FATAL CRASHES

The section covers the data in relation to fatal road crashes. The section will encompass the number of fatal crashes and fatalities, contributory factors, fatality data per road user group and major crashes.

2.2 Number of fatal crashes

The table below provides a comparison between two years. There was a decrease of 183 (2%) in comparison to 2018 and 2019. However, on a provincial level five (5) provinces recorded a decrease in this regard and three (3) provinces recorded increase and one province remained the same. The highest decrease was recorded for Free State with 10% followed by North West with 9%.

Number of Fatal Crashes per Province										
Year	EC	FS	GP	KZN	LI	MP	NC	NW	WC	RSA
2018	1 320	711	2 267	2 097	1 206	1 048	260	770	885	10 564
2019	1 320	642	2 180	2 012	1 132	1 064	316	702	1 013	10 381
Change	0	-69	-87	-85	-74	16	56	-68	128	-183
% Change	0	-10	-4	-4	-6	2	22	-9	14	-2

Table 1: Number of fatal crashes per province

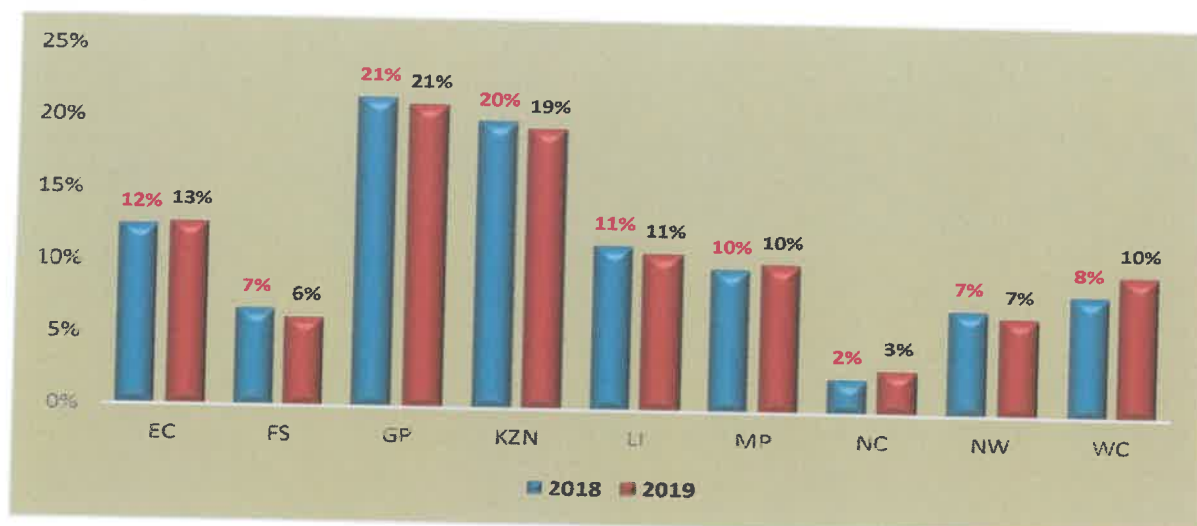


Figure 1: Percentage distribution of fatal crashes for the two quarters

3.1 Fatal Crashes per Day of Week

The details of the crashes per day of the week are given in the Table below. The country continues to experience most fatal crashes to be recorded as from Friday until Monday for both 2018 and 2019.

Year	Sun	Mon	Tue	Wed	Thurs	Fri	Sat	Total
2018	22%	12%	8%	8%	9%	16%	25%	100%
2019	22%	12%	9%	8%	10%	14%	25%	100%

Table 2: Percentage distribution of Fatal Crashes per day of week for the year 2018 and 2019

The percentage of fatal crashes per day for the period under review is reflected in the figure below.

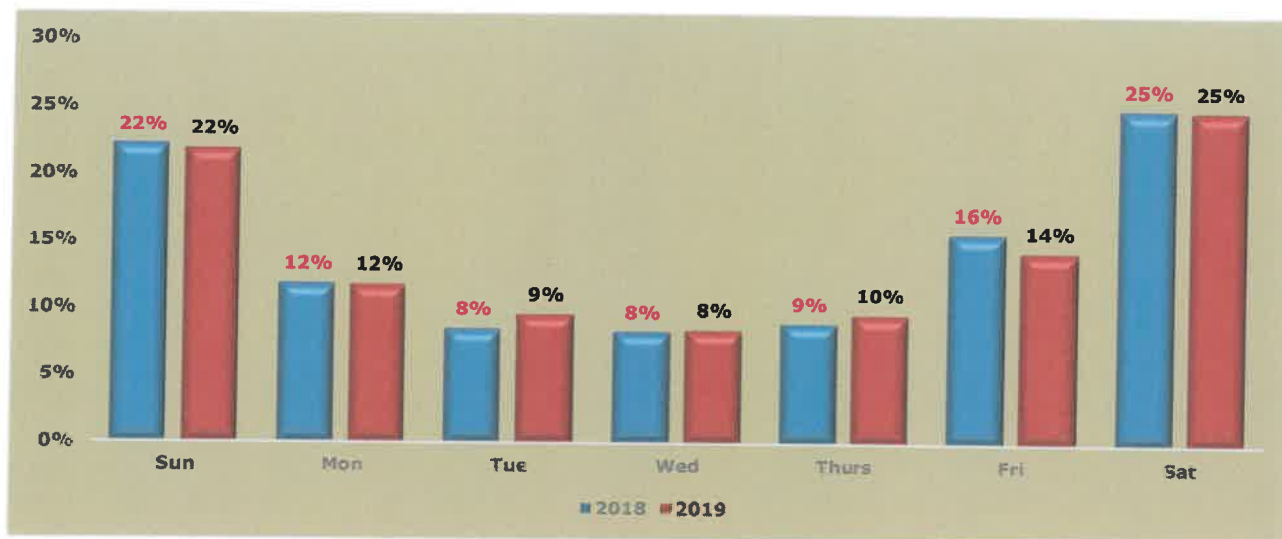


Figure 2: Percentage distribution of fatal crashes per day of week

3..2 Fatal Crashes per time of day

The percentage of fatal crashes per time of day for the period under review is reflected in the figure below.

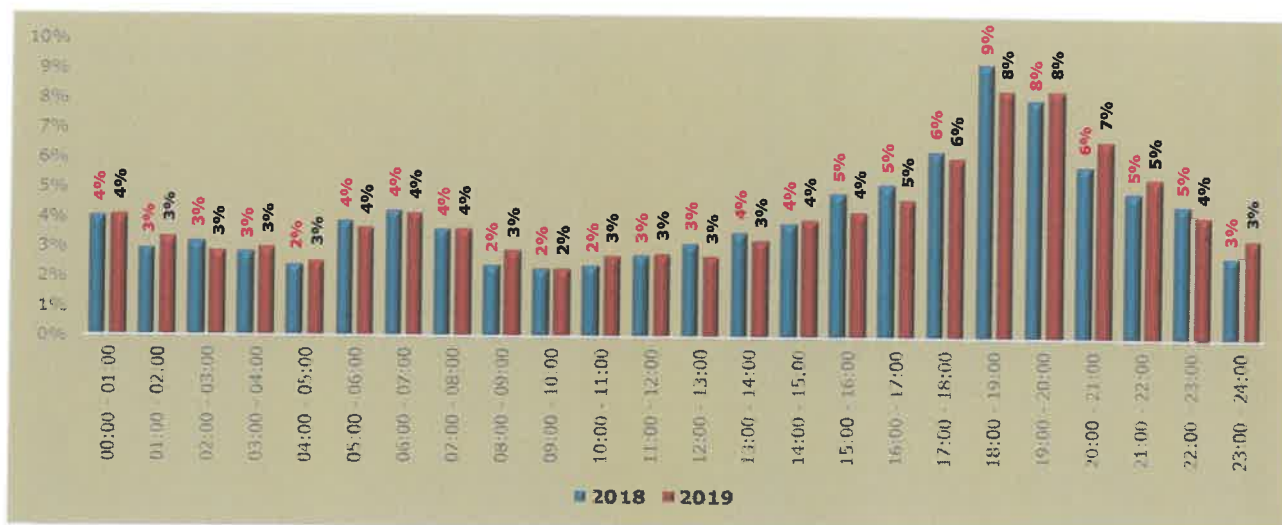


Figure 3: % distribution of fatal crashes per time of day for two years 2018 and 2019

The figure above depicts a comparison between fatal crashes per time of day comparing the year 2018 and 2019. In comparison, slot 18:00 to 19:00 and 19:00 to 20:00 were the highest with a contribution of 8% to fatal crashes in 2019 respectively. However, more than 5% contribution per slot has been observed as from 16:00 to

3..3 Fatal crashes per crash type

The percentage distribution of crash types involved in fatal crashes are reflected in the figure below.

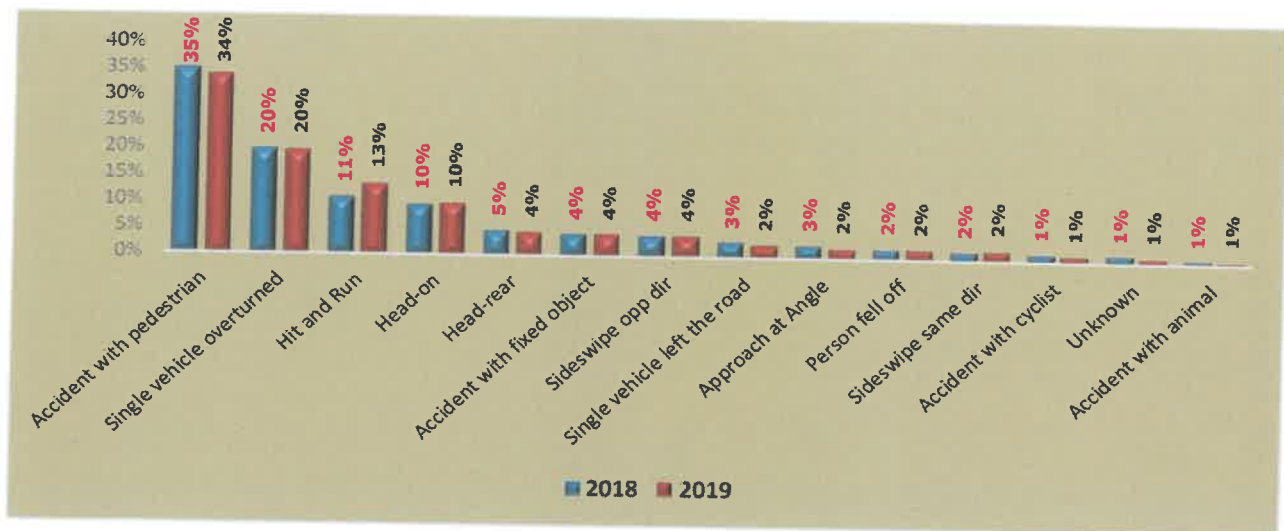


Figure 4: Percentage distribution of fatal crashes per crash type

The figure above depicts that most crashes occurred due to crashes with pedestrians and single vehicle overturned. Contributions of about 35% and 34% were recorded for crashes involving pedestrians for the two calendar years 2018 and 2019. Followed by single vehicle overturned with a contribution of 20% for both years.

3..4 Fatal crashes per vehicle type

The percentage contribution of various vehicles involved in the fatal crashes are reflected in the figure below.

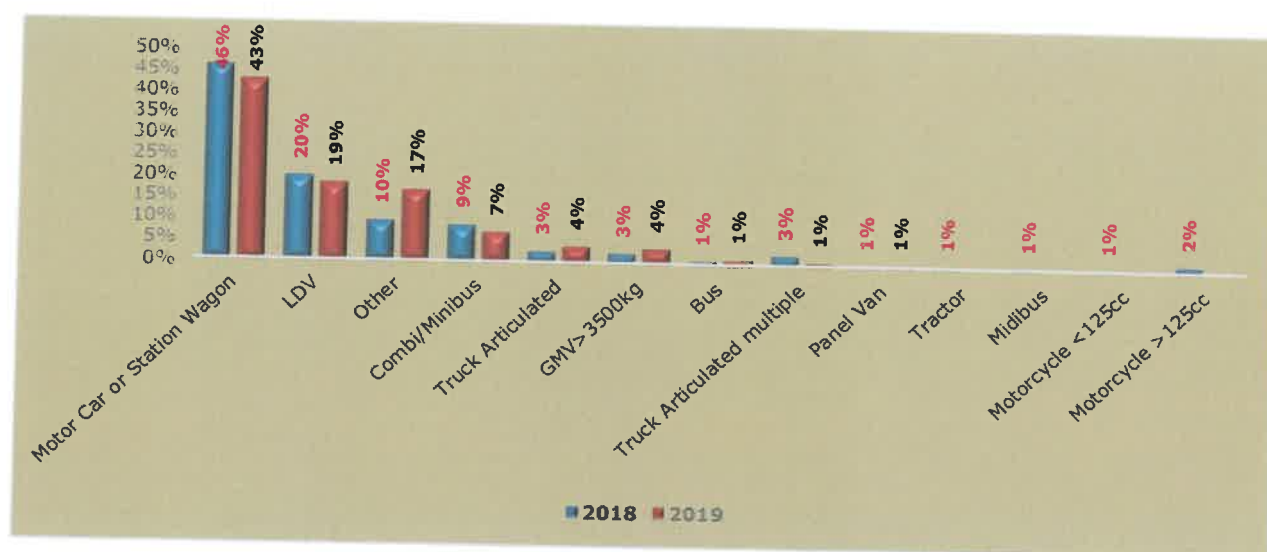


Figure 5: Percentage distribution of vehicle type

The vehicle types that contributed the most to fatal crashes were motorcars and LDV's with contributions of 43% and 19% respectively during 2019.

2.2 Contributory factors

To determine the contributory factors for fatal crashes, the contributory factors are classified as human factors (defined as a stable, general human abilities and limitations that are valid for all users regardless); vehicle factors (are more focussed on the vehicle itself and they cover issues around mechanical failures; and environment (include limited visibility, poorly marked roads, missing road signs, sudden changes in road infrastructure, gravel road, the state of the road and weather conditions).

The figure below depicts trends for contributory factors for the two years. The fatal crashes for Jan-Dec 2019 showed that human factors contributed 85% to the occurrence of fatal crashes followed by roads and environmental factors at 9%; and vehicle factors with a contribution of 5%.

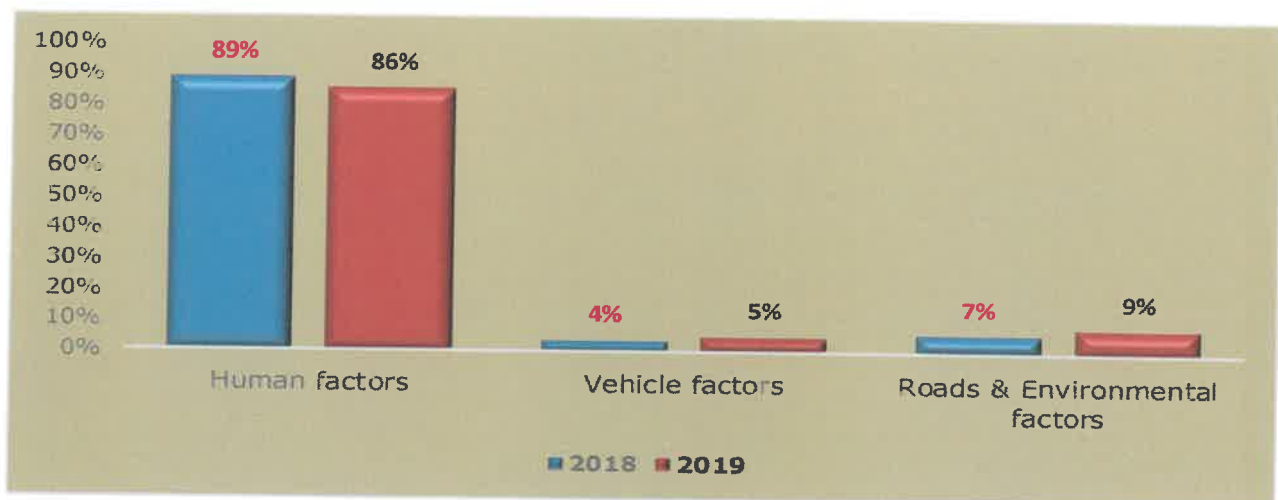


Figure 6: Comparison of contributory factors for 2018 and 2019

The human factors remain a challenge compared to other factors. However, there was a decrease of 3% for human factors and an increase of 2% for roads and environmental factors, while vehicles factors increased by 1% in comparison of the two years.

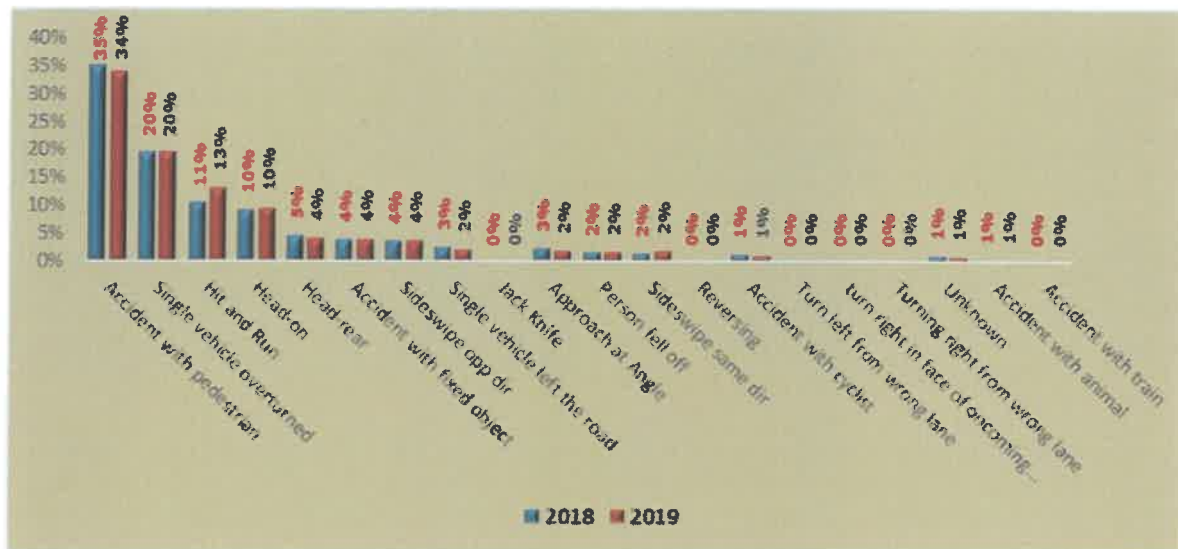


Figure 7: Percentage distribution of human factors

The figure above shows that jay-walking contributed 32% to the occurrence of crashes, followed by hit and run with 19% and speed too high for circumstances with 10% during 2019. The above mentioned three factors contributed 61% to the occurrence of fatal crashes.

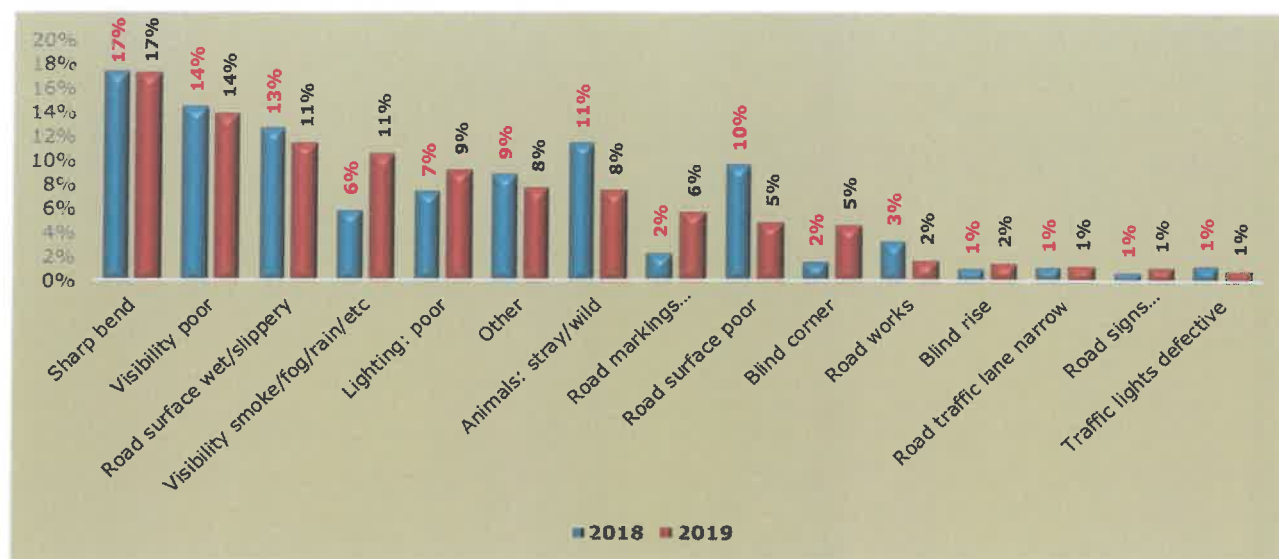


Figure 8: Percentage distribution of road and environmental factors

The figure above depicts that about 17% of crashes occurred within the sharp bends areas, followed by poor visibility with 14%. The wet/slippy road surface contributed 11% to the total road crashes during 2019. These are the top three (3) with a contribution of 42% collectively.

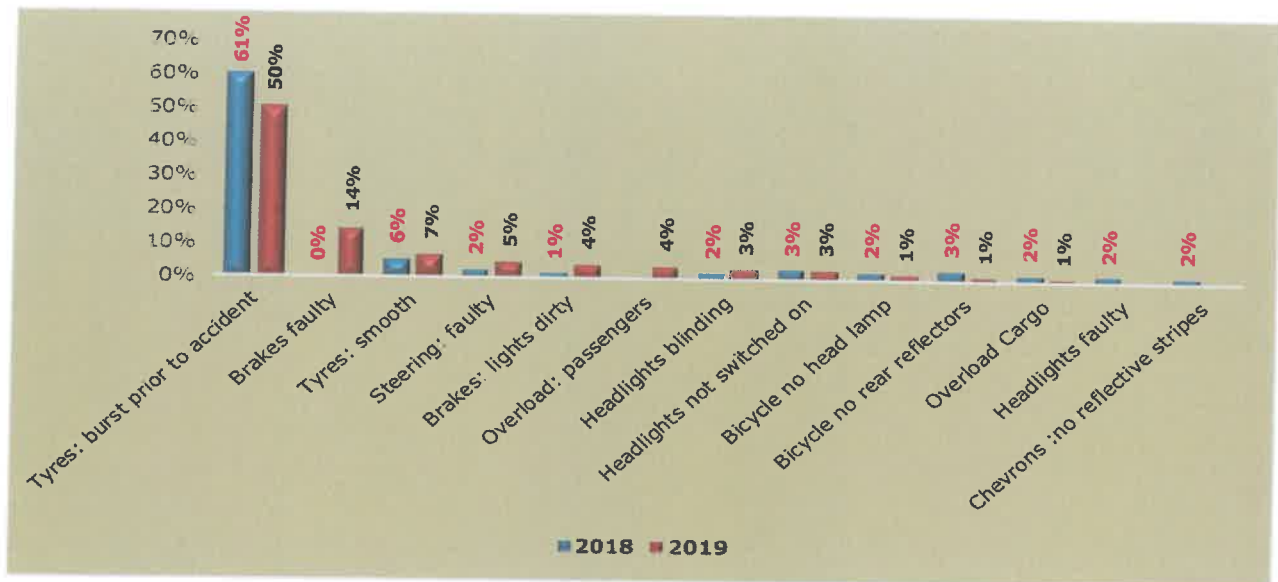


Figure 9: Percentage distribution for vehicle factor

The figure above shows that most crashes occurred as a result of a tyre burst prior to the crash with a contribution of 50% during 2019, followed by faulty brakes with a contribution of 14% and tyres smooth with a contribution of 7% during the year 2019.

4. ROAD FATALITIES ANALYSIS

The section covers the data in relation to road fatalities. Fatalities are defined as when a person or persons that are killed during or immediately after a crash, or death within 30 days after a crash happened as a direct result on such crash. The section will encompass the number of fatalities and percentage distribution per road user, gender, race and per age.

2.2 Number of fatalities per province

Number of Fatalities per Province										
Year	EC	FS	GP	KZN	LI	MP	NC	NW	WC	RSA
2018	1 675	945	2 539	2 473	1 581	1 313	352	979	1 064	12 921
2019	1 603	860	2 453	2 331	1 496	1 343	384	855	1 178	12 503
Change	-72	-85	-86	-142	-85	30	32	-124	114	-418
% Change	-4	-9	-3	-6	-5	2	9	-13	11	-3

Table 3: Comparison of fatalities per province for the two years 2018 and 2019

The table above shows a comparison of fatalities per province for the two years. A decrease in the number of fatalities is depicted from 12 921 in 2018 to 12 503 in 2019. Three provinces recorded an increase while the other six recorded decreases. The highest reduction was recorded by North West with 13% and followed by Free State with 9%.

2.2 Number of Fatalities per Road User Group, Gender and Race

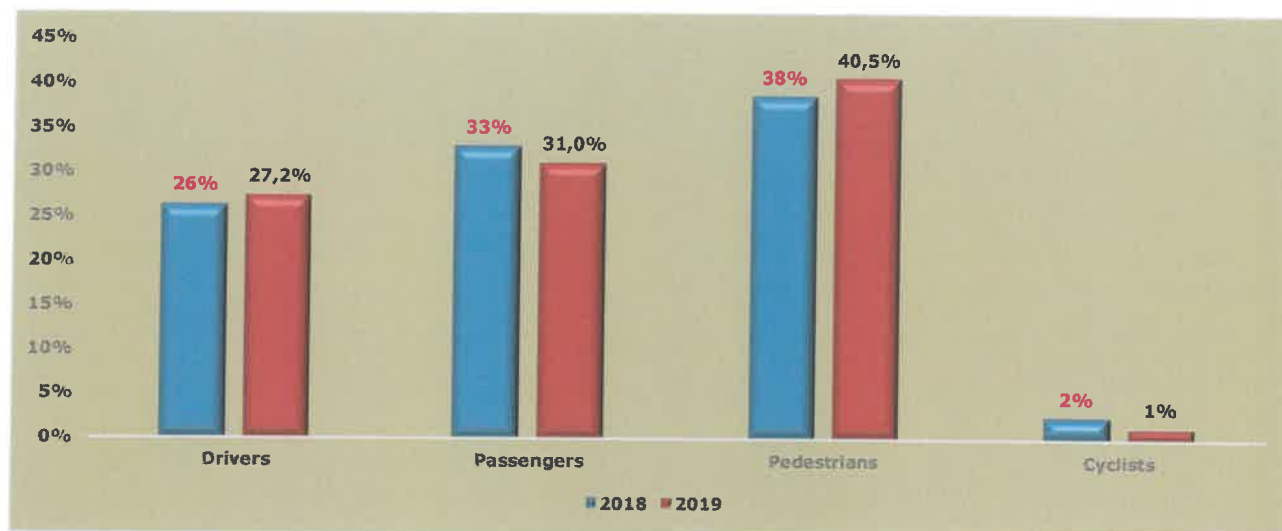


Figure 10: Percentage distribution of fatalities per road user

The percentage distribution of fatalities per road users group are reflected in the figure above. During the period under review pedestrians contributed 41%, followed by passengers with 31% and drivers with 27% to the total number of fatalities.

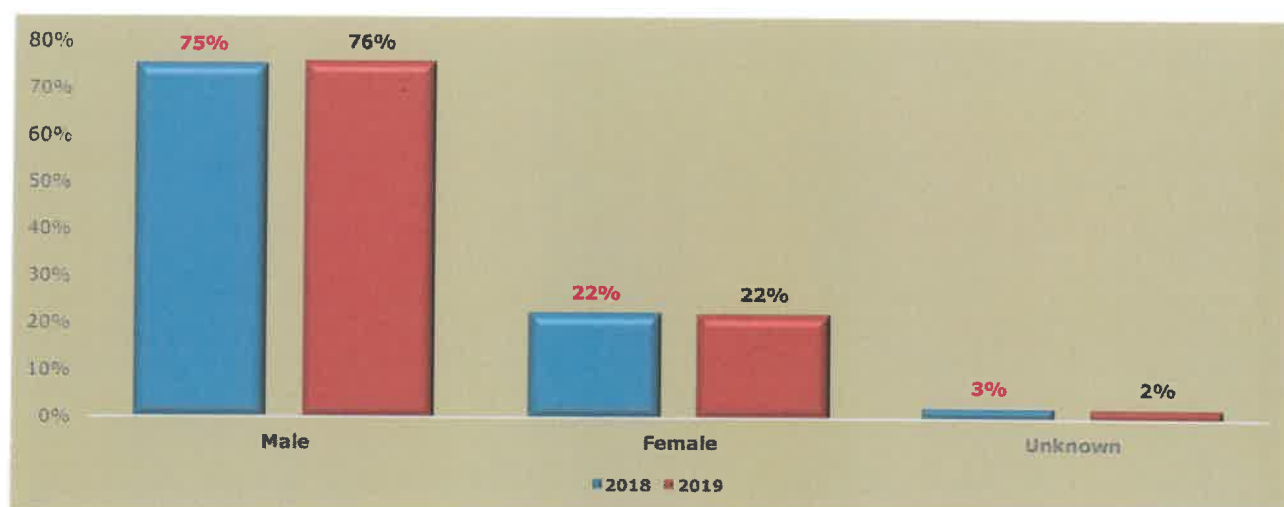


Figure 11: Percentage distribution of fatalities per gender

The figure above depicts trends for fatalities per gender for the two years. The trends show that there was an increase of 1% fatalities for males while females contribution remained at 22% in comparison of the two years.

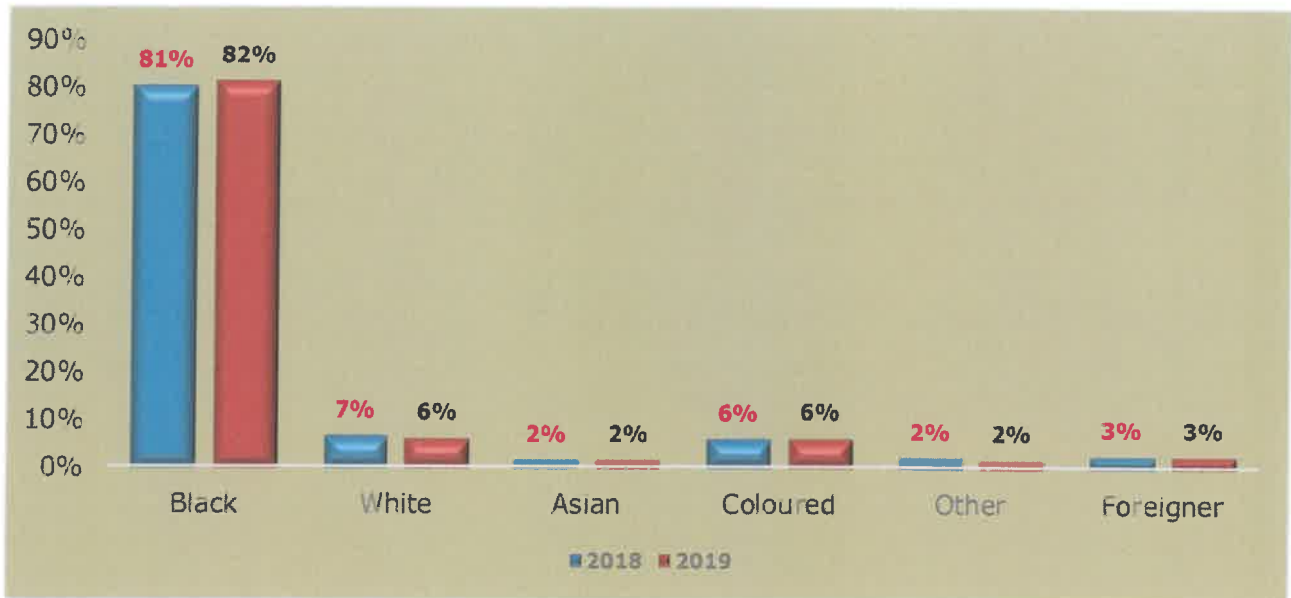


Figure 12: Percentage distribution of fatalities per race

2.2 Road user group fatalities per age group

The figures below provide information with regard to the fatalities per age and per road user type for the period January to December 2019. The information is categorised per road user group (Driver, Passenger, Pedestrian and Cyclists).

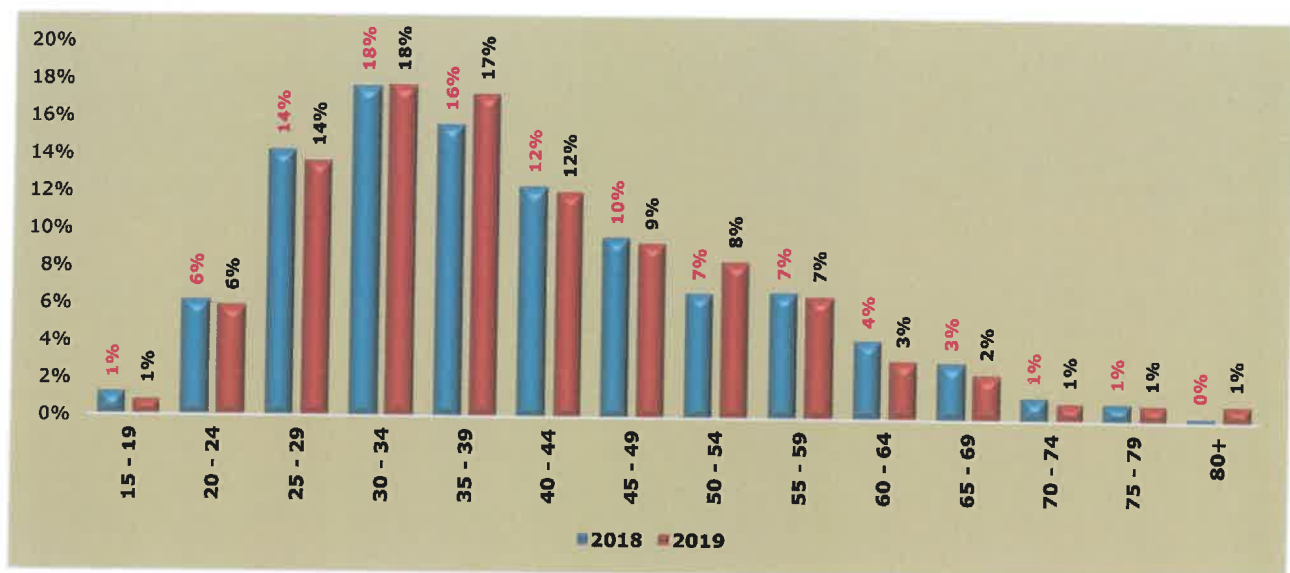


Figure 13: Percentage distribution of fatalities per age for drivers

The figure above shows that the highest fatalities for drivers were recorded from age group 25 to 44 years. Age group between 30 to 39 years being the peak age groups with contributions above 16%, followed by the age group between 25 to 29 years with a contribution of 14% for the period under review.

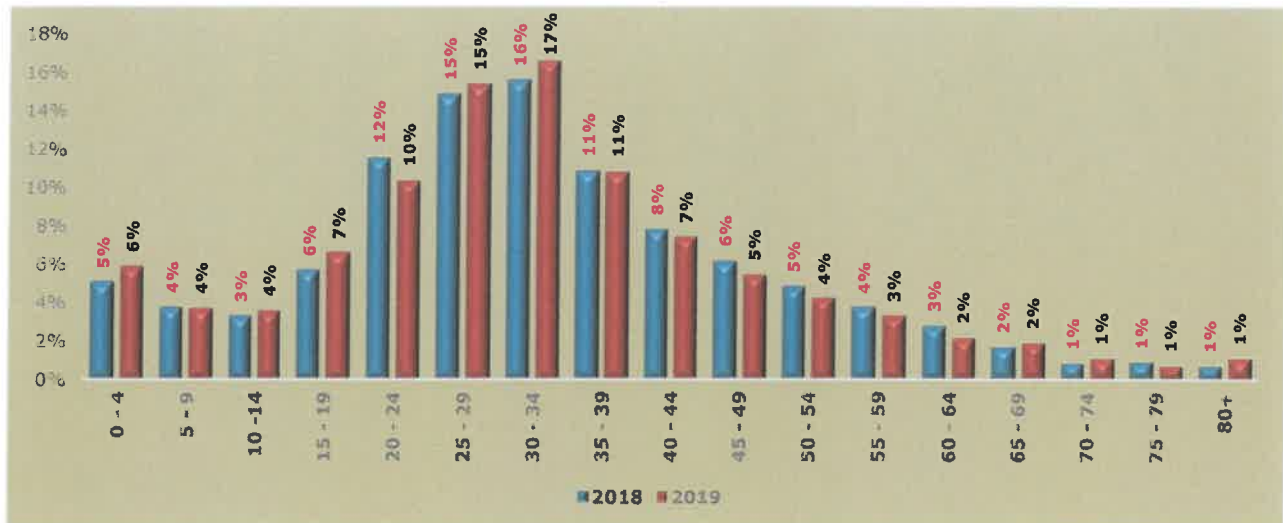


Figure 14: Percentage distribution of fatalities per age for passengers

The figure above indicates that most fatalities for passengers were recorded between age 20 and 39 years, having the age group between 25 to 34 years being the age group contributing the highest with above 15%. Followed by the age group between 20 to 24 years and 35 to 39 years with a contribution of 10% and 11% respectively for 2019.

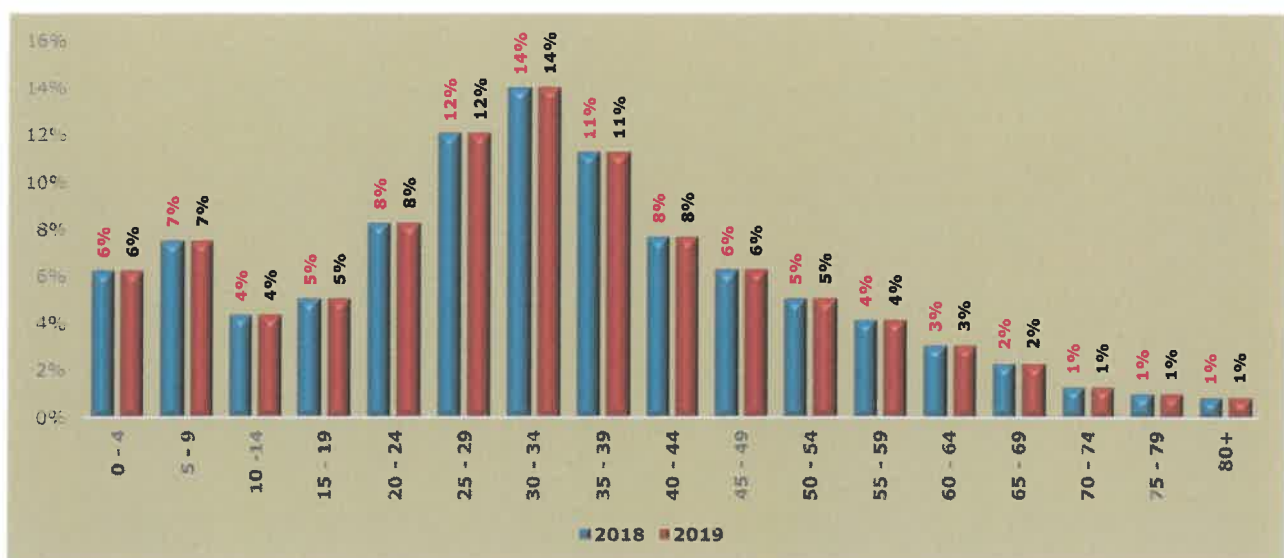


Figure 15: Percentage distribution of fatalities per age for pedestrians

The figure above indicates that most fatalities for pedestrians were recorded between the ages 25 to 39 years. The age group 30 to 34 recorded the highest fatalities with a contribution 14%, followed by age group between 25 to 29 and 35 to 39 with a contribution of 12% and 11%, respectively for the period under the review.

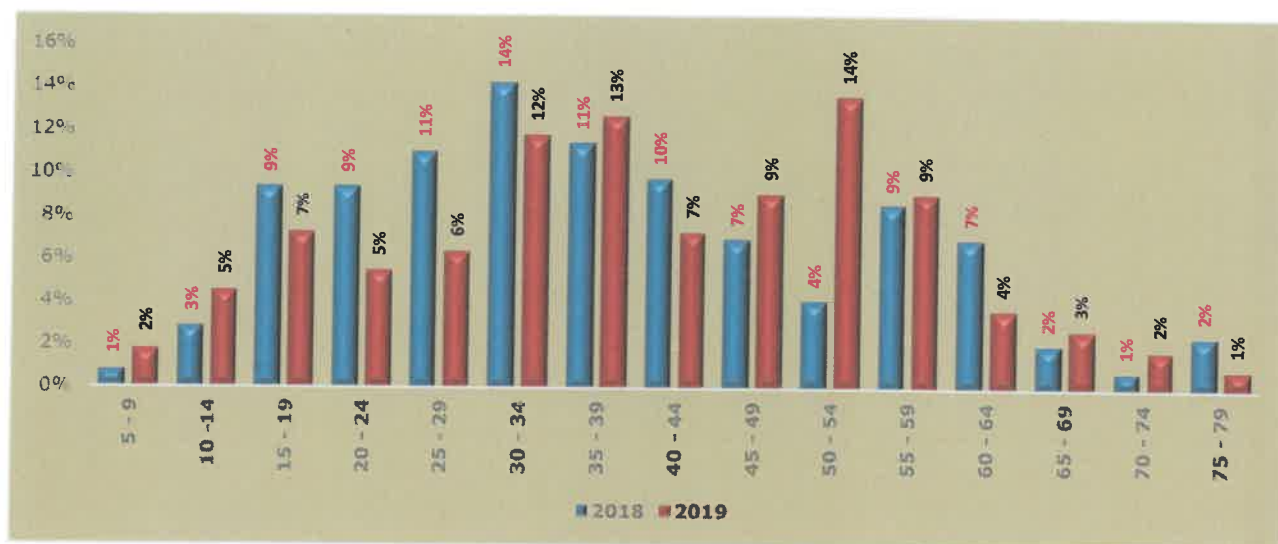


Figure 16: Percentage distribution of fatalities per age for cyclists

The figure above indicates that most fatalities for cyclists were recorded between ages 50 to 54 with a contribution of 14% from 4% in 2018 to 14% in 2019. Followed by age group 30 to 34 and 35 to 39 with 13% and 12% respectively during 2019. The age groups 20 to 24 and 25 to 29 recorded a reduction of 4% and 5%, respectively.

5. MAJOR CRASHES

This section provides for all the major crashes for the period under review. Major crashes are defined as Crashes where five (5) or more people died, Crashes involving vehicles carrying dangerous goods/ hazardous chemicals where there is a fatality and a spillage of the dangerous goods/ hazardous chemicals and any crash that the Corporation deems necessary to investigate.

2.2 Number of major crashes

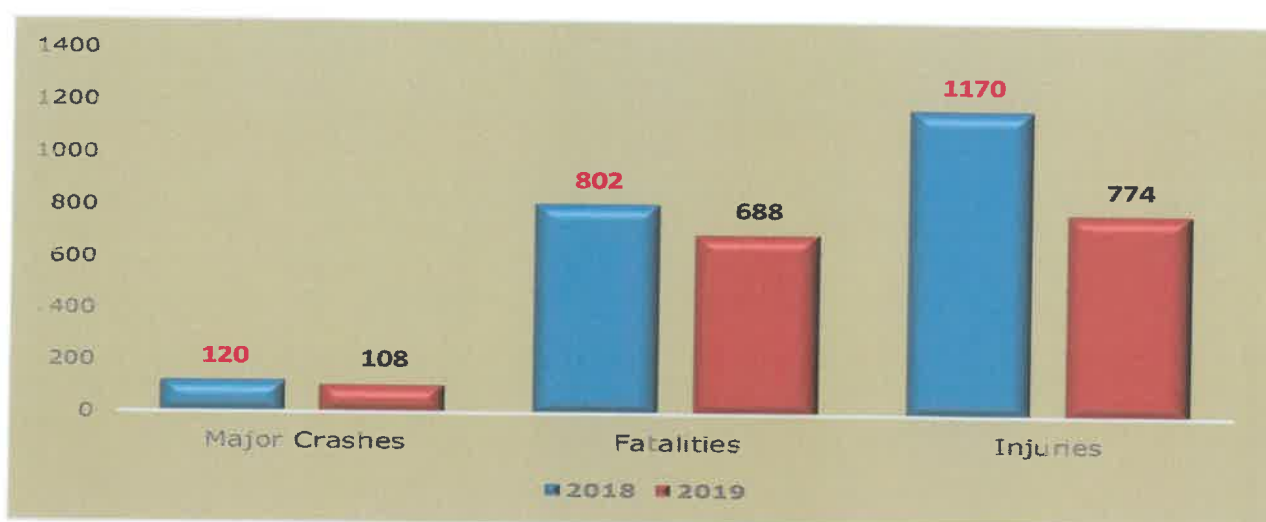


Figure 17: Number of major crashes, fatalities and injuries

The above figure indicates the annual number of major crashes reported, fatalities and injuries sustained during the calendar year 2019. A total number of one-thousand four-hundred and sixty-two (1462)- consisting of six-hundred and eighty-eight (688) fatalities and seven-hundred and seventy-four (774) injuries sustained in the one-hundred and eight (108) major crashes were reported and investigated. There was a 10% decrease with regards to the number of crashes, a 14.1% decrease on number of fatalities and a 33.5%

decrease in injuries sustained compared to the major crashes investigated during 2018.

2.2 Crash Types

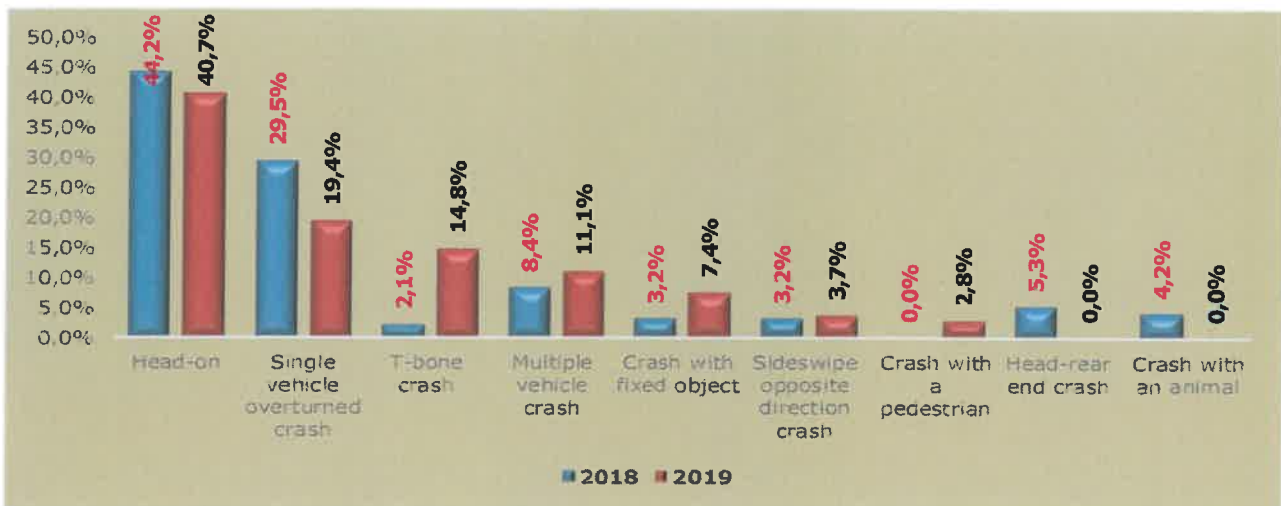


Figure 18: Major crashes per crash types

The above figure depicts the crash types that were recorded during the period under review. Most crashes occurred due to head on and single vehicle overturned. The percentage distribution by Head-on crash type shows a decrease of 3.5% from 44,2% in 2018 to 40.7% in 2019. The single vehicle overturning followed with 29.5% in 2018 to 19.4% in 2019. These two crash types remain a challenge with a contribution of 60,1% collectively.

2.2 Vehicle Involved in Major Crashes

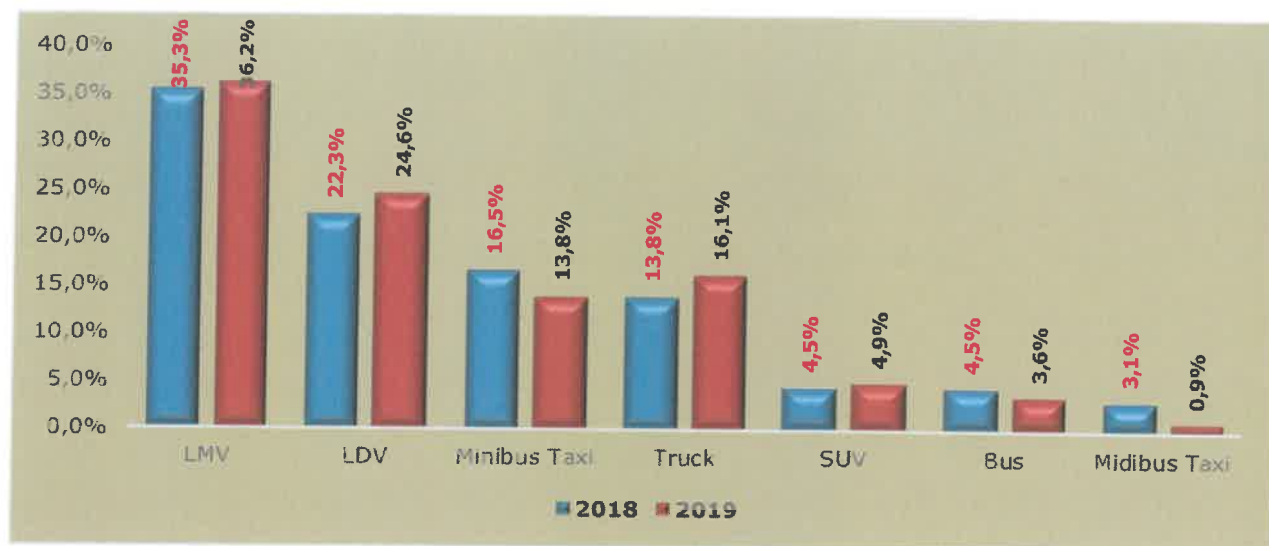


Figure 19: Vehicles involved in major crashes

The figure above depicts the comparison of vehicle types involved in the major crashes reported and investigated during the 2018 and 2019 calendar years. The vehicle type mostly involved were Light Motor Vehicles with 36.2%, followed by Light Delivery Vehicles with 24.6% and Minibus Taxi's with 13.8%. The percentage distribution by light motor vehicles shows an increase of 0.9% while the light delivery vehicles increased by 2.3% in comparison of the two years.

2.2 Contributory Factors

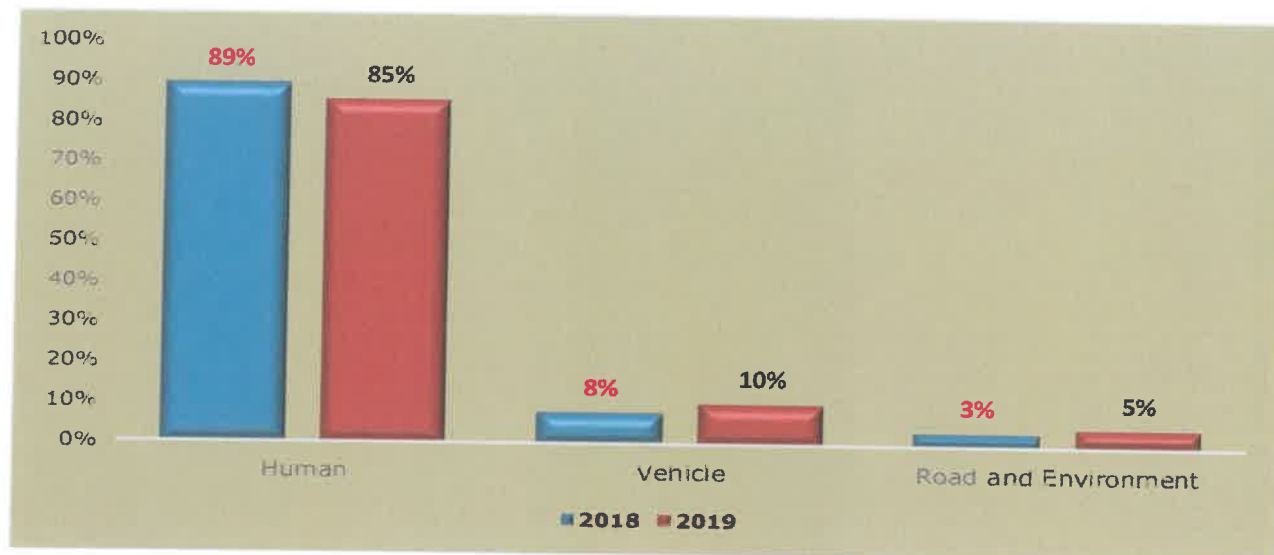


Figure 20: Percentage distribution of the contributory

The figure above provides information for all the contributory factors to major crashes. Human factors remained the major contributor to major crashes that occurred during 2019 with 85%, followed by Vehicle Factors with 10% and Road and Environmental Factors at 5%.

SECTION B

1. INTRODUCTION

The section covers the vehicle population and human mobility data, as well as driver population. The vehicle population data will encompass the number of registered vehicles inclusive of the status of their roadworthiness and licencing, as well as human mobility in terms of the number of persons per vehicle. The driver population data covers the number of registered drivers including the status and categories of licences

2. VEHICLE POPULATION

2.2 Number of Registered Vehicles

The number of registered vehicles increased by 238 650 (1.91%) from 12 462 979 on 31 December 2018 to 12 701 629 vehicles on 31 December 2019. Detail per type of vehicle is given in table below.

Number of Registered Vehicles	Number registered Dec 2018	Number registered Dec 2019	Change	% Change	% of Group Dec 2019	% of Total Dec 2019
Motorised Vehicles						
Motorcars	7 340 740	7 498 948	158 208	2,16	65,26	59,04
Minibuses	330 023	342 735	12 712	3,85	2,98	2,70
Buses	64 652	65 229	577	0,89	0,57	0,51
Motorcycles	346 617	343 391	-3 226	-0,93	2,99	2,70
LDV's - Bakkies	2 557 847	2 609 745	51 898	2,03	22,71	20,55
Trucks	377 090	380 710	3 620	0,96	3,31	3,00
Other & Unknown	250 843	250 069	-774	-0,31	2,18	1,97
Total Motorised	11 267 812	11 490 827	223 016	1,98	100,00	90,47
Towed Vehicles						
Caravans	100 906	99 590	-1 316	-1,30	8,23	0,78
Heavy Trailers	199 410	206 917	7 507	3,76	17,09	1,63
Light Trailers	879 337	889 185	9 848	1,12	73,44	7,00
Other & Unknown	15 515	15 110	-405	-2,61	1,25	0,12
Total Towed	1 195 168	1 210 802	15 635	1,31	100,00	9,53
All Vehicles	12 462 979	12 701 629	238 650	1,91		100,00

Table 4: Number of registered vehicles per type

The table above shows that on a percentage basis the biggest change was for minibuses and heavy trailers with an increase of 3.85% and 3.76% respectively. The number of registered minibuses increased from 330 023 to 342 735 and followed by heavy trailers which increased from 199 410 to 206 917, respectively.

The monthly percentage change over the past year for motorised vehicles are shown in the figure below.

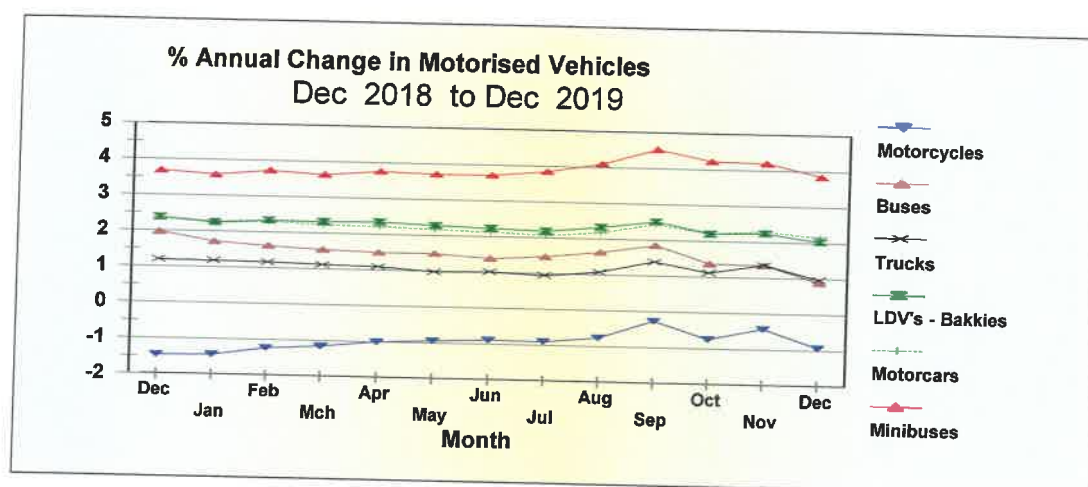


Figure 21: Percentage Annual Growth in Vehicles

The total motor vehicle population per Province for December 2018 and December 2019 respectively, is given in table and reflected in the figure below.

Number of Registered Vehicles per Province	Number registered Dec 2018	Number registered Dec 2019	Change	% Change	% of Total Dec 2019
Gauteng	4 795 503	4 885 748	90 245	1,88	38,47
KwaZulu-Natal	1 660 652	1 695 075	34 423	2,07	13,35
Western Cape	2 022 790	2 063 299	40 509	2,00	16,24
Eastern Cape	828 069	845 614	17 545	2,12	6,66
Free State	632 208	638 550	6 342	1,00	5,03
Mpumalanga	900 217	916 351	16 134	1,79	7,21
North West	627 847	636 321	8 474	1,35	5,01
Limpopo	713 993	735 448	21 455	3,00	5,79
Northern Cape	281 700	285 223	3 523	1,25	2,25
RSA	12 462 979	12 701 629	238 650	1,91	100

Table 5: Number of registered vehicles per province

The number of registered vehicles per province show the highest increase recorded for Limpopo with an increase of 3% from 713 993 in 2018 to 735 448 in 2019 followed by Eastern Cape, with an increase of 2.12% from 828 069 to 845 614.

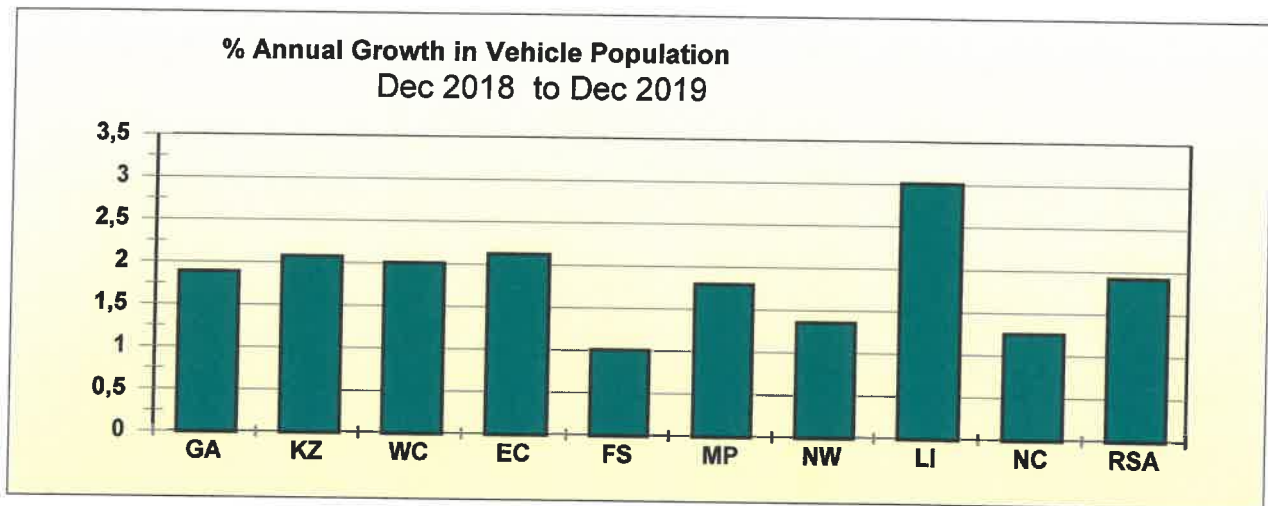


Figure 22: Percentage Annual Growth in Vehicle Population

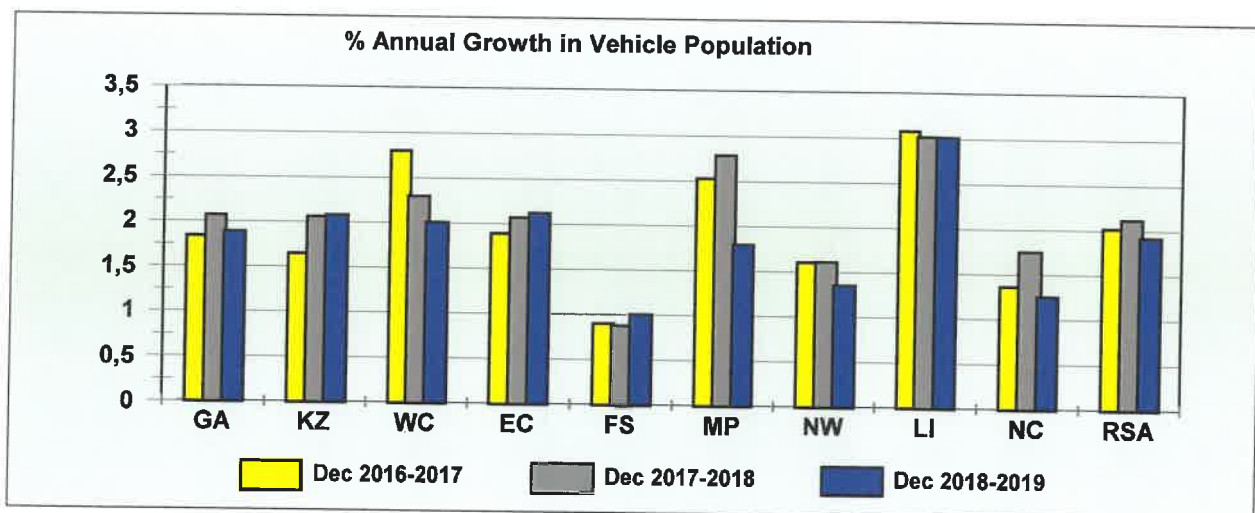


Figure 23: Percentage Annual Growth in Vehicle Population

Over the past year from December 2018 to December 2019 the highest percentage growth in total vehicles was recorded in Limpopo with a growth of 3.00% followed by Eastern Cape with a growth of 2.12%.

The percentage vehicles registered per province as on 31 December 2019 is reflected in the figure below.

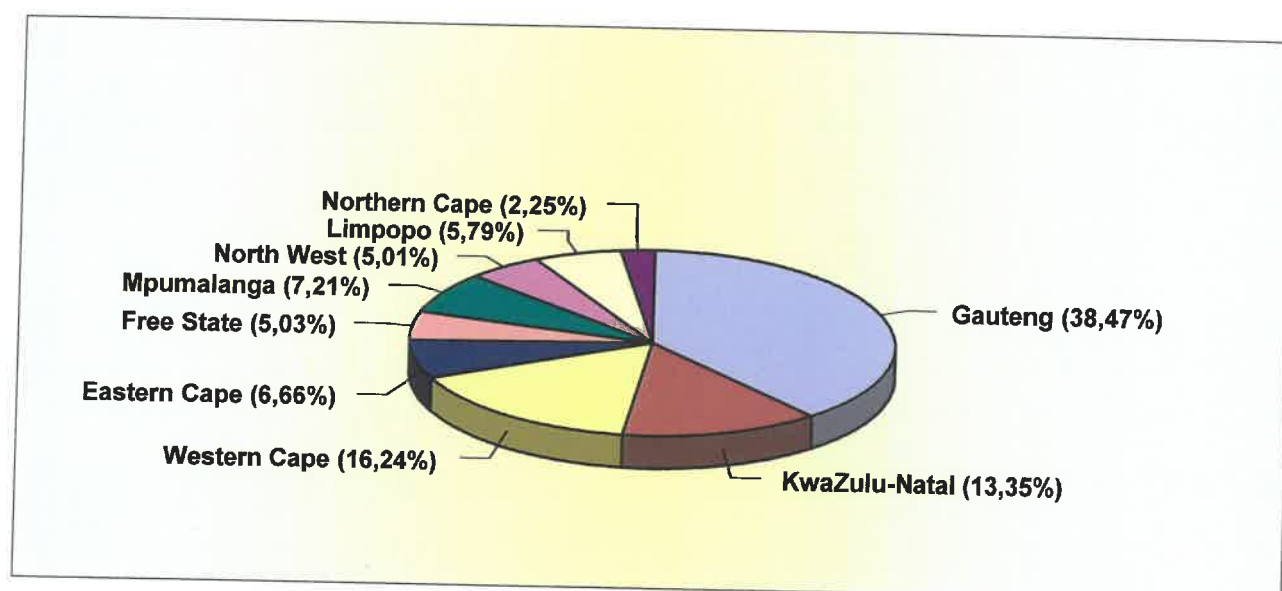


Figure 24: Percentage Vehicles Registered per Province

The information in the figure above shows that 38.47% of all vehicles were registered in Gauteng; 16.24% in Western Cape and 13.35% in Kwa-Zulu Natal.

More detailed information on the number of vehicles per type registered per Province for December 2018 and December 2019 is given in the table under **Appendix A**.

2.2 Human Population and Mobility

The estimated human population for each year from 2016 to 2019 is given in table below. (These figures are estimates from the mid-year estimates released annually by Stats SA).

Month	Province									Total
	GA	KZ	WC	EC	FS	MP	NW	LI	NC	RSA
Dec 2016	13,58	11,28	6,34	7,14	2,87	4,40	3,79	5,89	1,20	56,48
Dec 2017	13,61	11,24	6,34	7,14	2,87	4,38	3,80	5,87	1,20	56,45
Dec 2018	14,13	11,36	6,49	6,93	2,89	4,48	3,86	5,91	1,22	57,28
Dec 2019	14,49	11,64	6,60	7,02	2,95	4,55	3,94	5,98	1,23	58,41

Table 6: Estimated mid-month human population per province - million

Based on the information on human and vehicle populations, the average number of persons per vehicle per Province (excluding trucks, towed vehicles and "other" and "unknown" vehicles) at the end of December 2016, 2017, 2018 and 2019 is shown in the table and reflected in the figure below.

Month	GA	KZ	WC	EC	FS	MP	NW	LI	NC	RSA
Dec 2016	3,39	8,10	3,82	10,42	6,10	6,59	7,69	10,29	5,57	5,56
Dec 2017	3,33	7,85	3,71	10,19	6,03	6,39	7,56	9,92	5,47	5,43
Dec 2018	3,38	7,76	3,72	9,68	6,00	6,35	7,52	9,69	5,44	5,38
Dec 2019	3,40	7,78	3,71	9,59	6,04	6,30	7,55	9,49	5,43	5,38

Table 7: Average number of persons per vehicle (excluding trucks, other, unknown and towed vehicles)

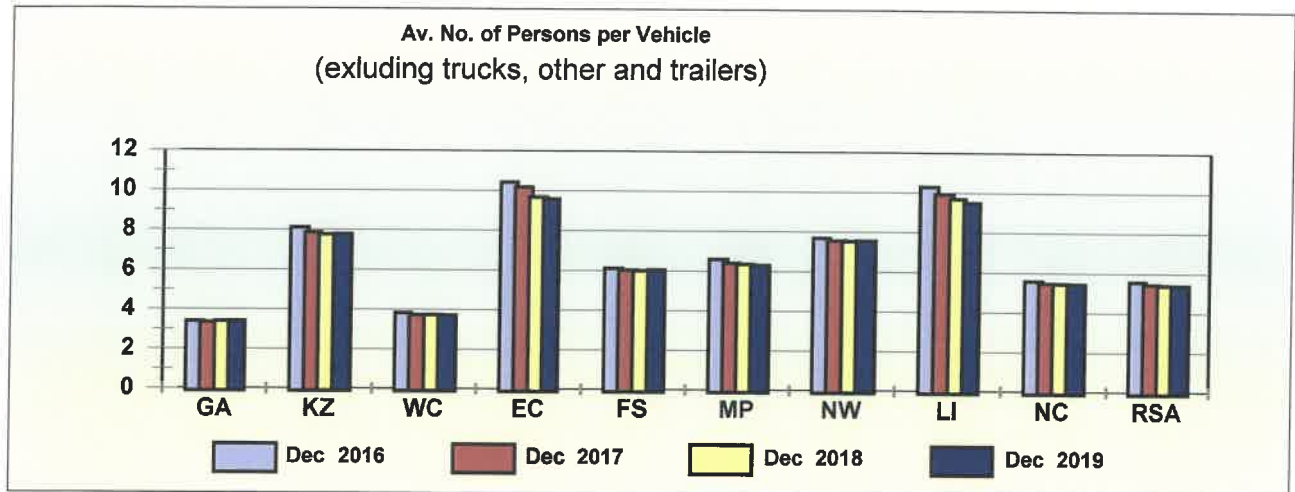


Figure 25: Average number of persons per vehicle (excluding trucks, other and trailer)

The percentage annual change or improvement in human mobility per province is reflected in table below.

Month	Province									Total
	GA	KZ	WC	EC	FS	MP	NW	LI	NC	RSA
Dec 2016-2017	1,88	3,03	2,81	2,27	1,23	3,00	1,66	3,55	1,90	2,41
Dec 2017-2018	-1,60	1,15	-0,16	4,96	0,52	0,63	0,51	2,39	0,43	0,78
Dec 2018-2019	-0,51	-0,22	0,24	0,96	-0,77	0,69	-0,40	2,01	0,29	0,09

Table 8: Percentage improvement in mobility per province

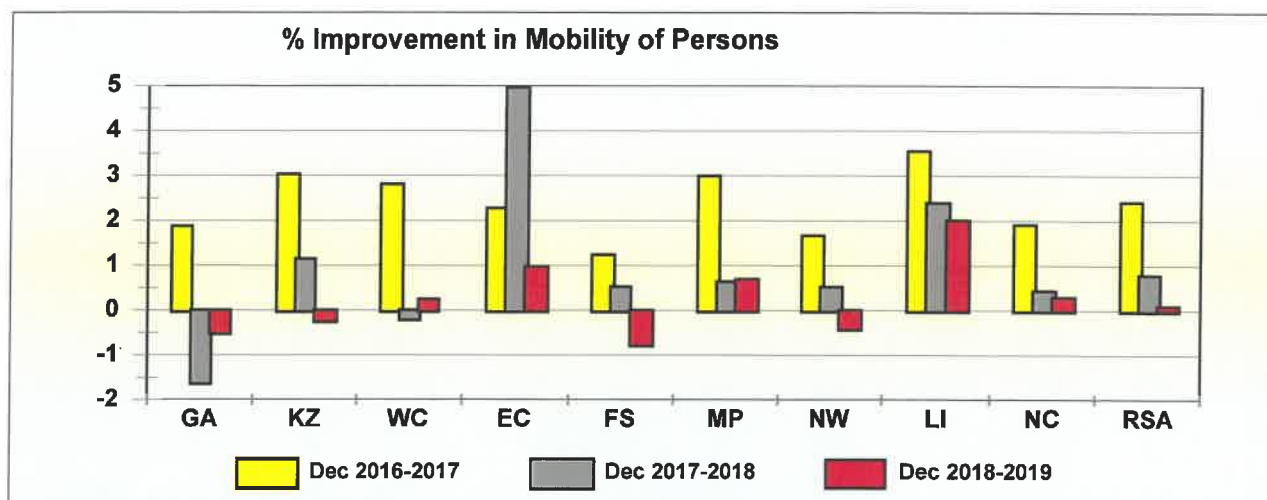


Figure 26: Percentage improvement in mobility of persons

The information in tables and figures above shows that on a national basis the general overall mobility in terms of the number of persons per road vehicle (vehicles that can reasonably transport passengers – motorcars, minibuses, buses, motorcycles and LDV’s “bakkies”), improved by 0.78% from a national average of 5.43 persons per vehicle at the end of December 2017 to 5.38 persons per vehicle at the end of December 2018. From the end of December 2018 to December 2019 the improvement shows a decrease of 0.09%, from 5.38 to 5.38 persons per vehicle.

Although they do show some improvement, the “least mobile” Provinces remain Eastern Cape with 9.59 persons per vehicle; followed by the Limpopo with 9.49 persons per vehicle at the end of December 2019. The “most mobile” Provinces are Kwa-Zulu Natal and the North West with an average of 7.78 and 7.55 persons per vehicle respectively at the end of December 2019.

The average number of persons per "heavy" road passenger transport vehicle (buses and minibuses) is shown in table below and reflected in the figure below.

Month	GA	KZ	WC	EC	FS	MP	NW	LI	NC	RSA
Dec 2016	97	192	155	262	186	145	167	208	183	153
Dec 2017	95	185	149	254	182	140	165	199	175	148
Dec 2018	95	180	147	240	181	138	162	191	169	145
Dec 2019	95	179	145	232	180	134	160	184	162	143

Table 9: Average number of persons per "heavy" passenger transport vehicle (buses and minibuses)

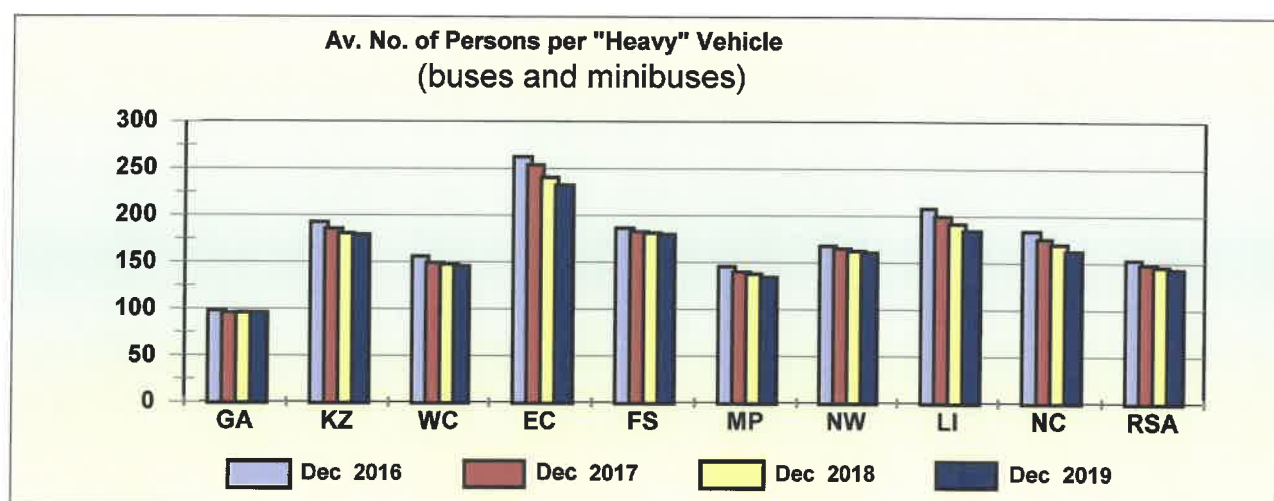


Figure 27: Average number of persons per " heavy vehicles" (buses and minibuses)

The percentage annual change or improvement in the number of persons per "heavy" passenger road transport vehicle per province is reflected in the table below.

Month	Province									Total
	GA	KZ	WC	EC	FS	MP	NW	LI	NC	RSA
Dec 2016-2017	2,46	3,89	4,37	3,23	2,07	3,96	1,68	4,03	4,74	3,22
Dec 2017-2018	-0,51	2,44	0,88	5,28	0,69	1,38	1,56	4,04	3,35	1,87
Dec 2018-2019	-0,02	0,81	1,57	3,44	0,68	2,66	1,09	3,77	4,15	1,35

Table 10: Percentage improvement on average number of persons per "heavy" passenger transport vehicles (buses and minibuses)

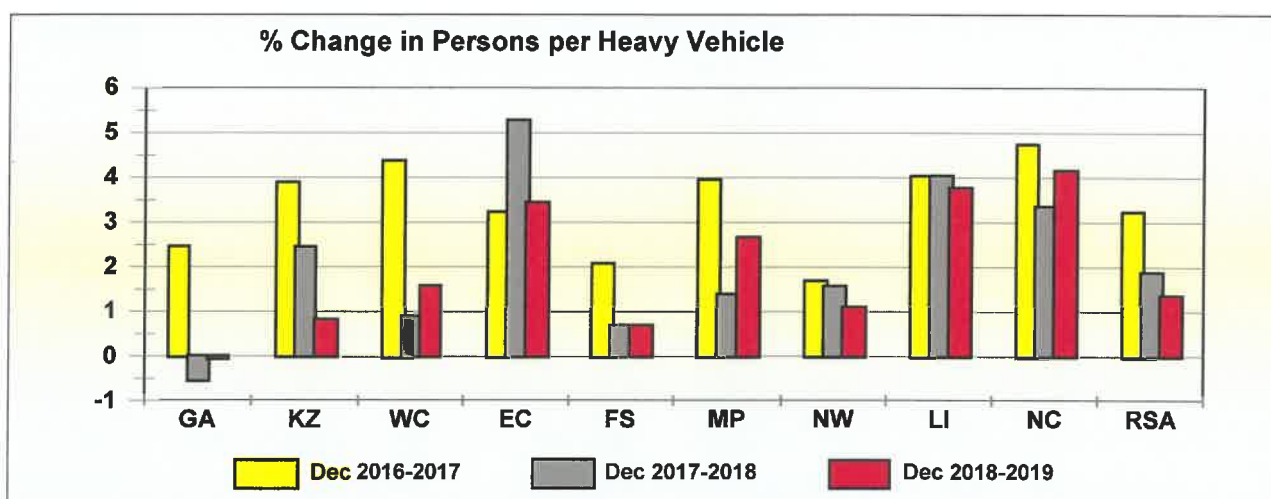


Figure 28: Average number of persons per " heavy vehicles" (buses and minibuses)

The information in tables and figure above show that, since the previous year-on-year improvement, the national overall mobility and quality of public road transport in terms of the number of persons per "heavy" passenger road transport vehicle from December 2018 to December 2019 increased by 1.35% from 145 persons per vehicle to 143 persons per vehicle.

On a Provincial percentage basis, the highest improvement was in the Northern Cape where the average number of persons per vehicle changed by 4.15% from about 169 persons per vehicle in December 2018 to 162 persons per

vehicle at the end of December 2019. In Limpopo the improvement was 3.77% from 191 to 184.

The average number of "heavy" road passenger transport vehicle (buses and minibuses) per 10,000 human population per Province is shown in the table below and reflected in the figure below.

Month	GA	KZ	WC	EC	FS	MP	NW	LI	NC	RSA
Dec 2016	103	52	64	38	54	69	60	48	55	65
Dec 2017	105	54	67	39	55	72	61	50	57	68
Dec 2018	105	55	68	42	55	73	62	52	59	69
Dec 2019	105	56	69	43	56	75	62	54	62	70

Table 11: Average number of public transport vehicles (buses and minibuses) per 10,000 human population

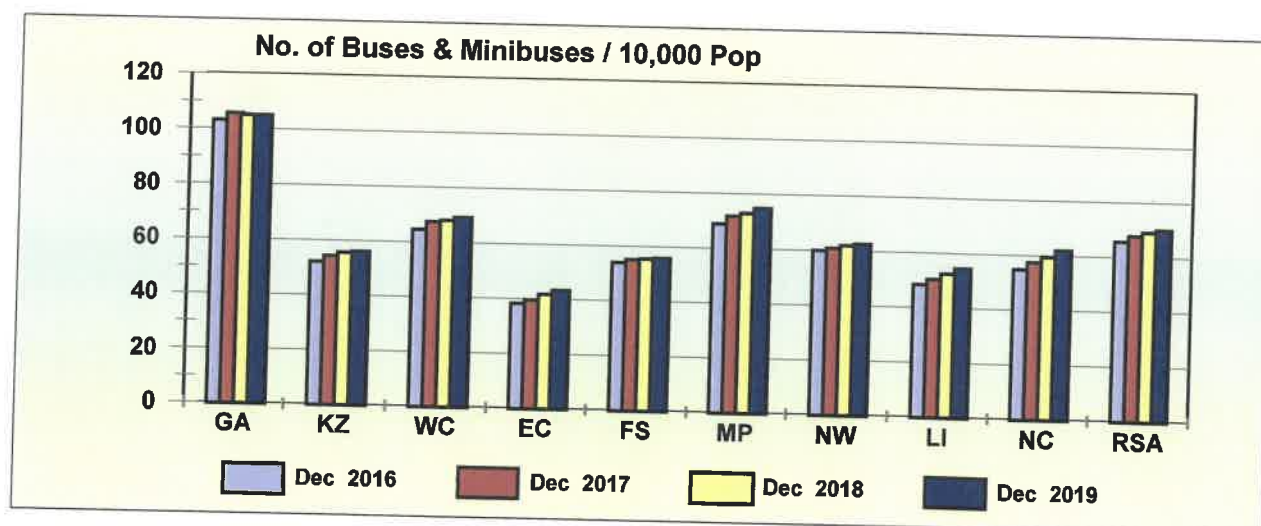


Figure 29: Number of buses and minibuses / 10,000 human population

3.1 Un-Roadworthy and Un-Licensed Vehicles

3.3.1 General

Un-roadworthy vehicles are defined as those of which the owners failed to submit the vehicles for compulsory annual roadworthy tests (including buses, minibus taxis and freight transport vehicles) or on change of ownership. Un-licensed vehicles are those of which the owners failed to renew the vehicle licences within the time frame allowed.

On a national basis the total number of vehicles that are either un-roadworthy, un-licensed or both decreased by 28 740 (2.46%) from 1 170 166 vehicles as on 31 December 2018 to 1 141 426 vehicles as on 31 December 2019. Detail in this regard per type of vehicle is provided in the table below and the percentage (%) change from 2018 to 2019 reflected in the figure below.

Number of Un-Roadworthy, Un-Licensed Vehicles or Both				
Vehicle Type	Dec 2018	Dec 2019	Change	% Change
Motorcars	625 878	611 019	-14 859	-2,37
Minibuses	59 911	62 222	2 311	3,86
Buses	9 871	10 304	433	4,39
Motorcycles	68 473	63 085	-5 388	-7,87
LDV's - Bakkies	198 099	195 572	-2 527	-1,28
Trucks	65 462	66 437	975	1,49
Caravans	8 047	7 170	-877	-10,90
Heavy Trailers	25 924	27 149	1 225	4,73
Light Trailers	75 718	67 789	-7 929	-10,47
Unknown	32 783	30 679	-2 104	-6,42
All Vehicles	1 170 166	1 141 426	-28 740	-2,46

Table 12: Number of un-roadworthy, un-licensed vehicles or both

Most vehicles have recorded a decrease in this regard with exception of minibus, buses and trucks. The highest decrease was recorded for caravans with 10.90% followed by light trailers with 10.47%.

Detail on the number of vehicles that are either un-roadworthy, un-licensed or both per Province is provided in the table below and the percentage (%) change from 2018 to 2019 reflected in the figure below.

Year	GA	KZN	WC	EC	FS	MP	NW	LI	NC	RSA
Dec 2018	488 933	143 785	147 940	79 064	65 754	89 611	63 701	66 802	24 576	1 170 166
Dec 2019	493 052	138 704	133 005	75 381	61 985	89 512	60 186	67 172	22 429	1 141 426
Change	4 119	-5 081	-14 935	-3 683	-3 769	-99	-3 515	370	-2 147	-28 740
% Change	0,84	-3,53	-10,10	-4,66	-5,73	-0,11	-5,52	0,55	-8,74	-2,46

Table 13: Number of vehicles that are un-roadworthy or un-licensed or both

The information in tables and figures above shows that most provinces have recorded a decrease in this regard. The highest percentage change has been recorded for Western Cape with 10.10% followed by Northern Cape with 8.74%.

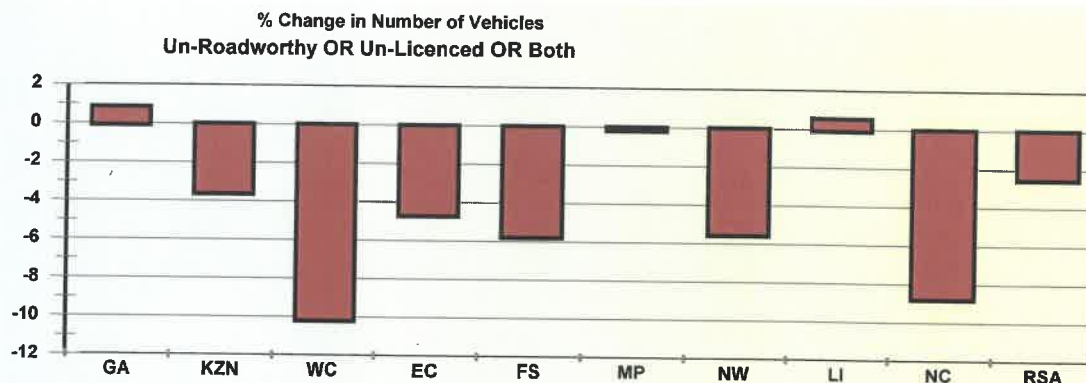


Figure 30: Percentage change in number of vehicles un-roadworthy or un-licensed or both

3.3.2 Number of Un-Roadworthy Vehicles

The number of vehicles that are un-roadworthy (but licenced) increased by 16 482 (2.86%) from 576 173 vehicles as on 31 December 2018 to 592 655 vehicles as on 31 December 2019. Detail in this regard is given in the table below and the percentage of un-roadworthy vehicles per type of vehicle, as a percentage of the number registered, is reflected in the figure below.

Vehicle Type	Dec 2018	Dec 2019	Change	% Change
Motorcars	279 059	285 525	6 466	2,32
Minibuses	39 065	41 577	2 512	6,43
Buses	7 734	8 074	340	4,40
Motorcycles	37 381	37 306	-75	-0,20
LDV's - Bakkies	89 793	92 656	2 863	3,19
Trucks	50 339	51 848	1 509	3,00
Caravans	3 786	3 801	15	0,40
Heavy Trailers	21 787	22 464	677	3,11
Light Trailers	26 758	28 210	1 452	5,43
Unknown	20 471	21 194	723	3,53
All Vehicles	576 173	592 655	16 482	2,86

Table 14: Number of un-roadworthy vehicles

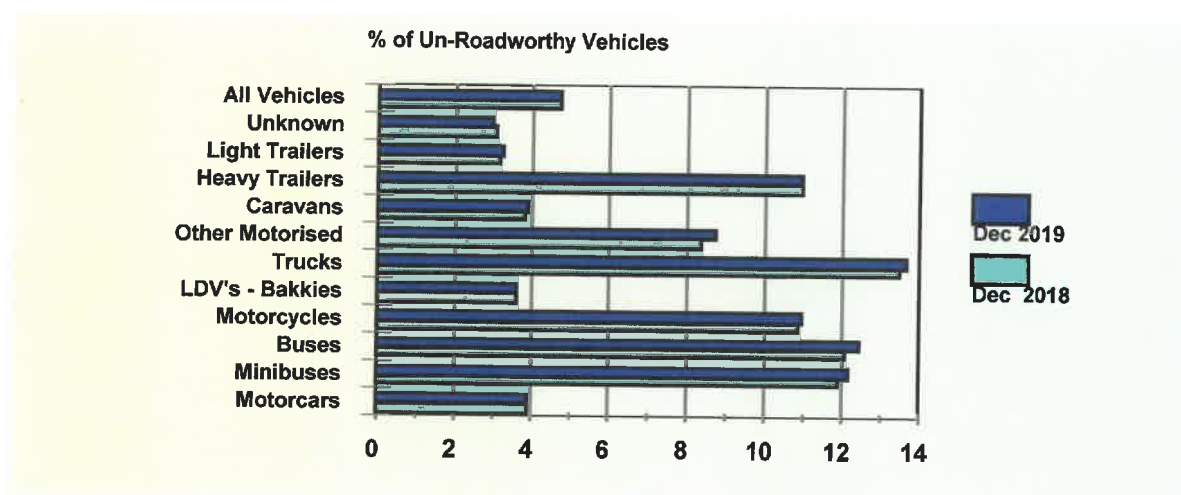


Figure 31: Percentage of un-roadworthy vehicles

The information in the table and figure above shows that all vehicle types have recorded an increase in this regard. The highest decrease for un-roadworthy vehicles was recorded for minibuses with a decrease of 2 512 (6.43%) from 39 065 at the end of December 2018 to 41 577 at the end of December 2019.

Details with regards to the number of vehicles that are un-roadworthy per Province are provided in the table below and the percentage (%) change from 2018 to 2019 reflected in the figure below.

Year	GA	KZN	WC	EC	FS	MP	NW	LI	NC	RSA
Dec 2018	258 416	66 423	73 843	31 715	35 128	43 614	29 127	26 811	11 096	576 173
Dec 2019	271 168	69 087	71 592	33 567	35 697	43 139	29 852	27 558	10 995	592 655
Change	12 752	2 664	-2 251	1 852	569	-475	725	747	-101	16 482
% Change	4,93	4,01	-3,05	5,84	1,62	-1,09	2,49	2,79	-0,91	2,86

Table 15: Number of un-roadworthy vehicles

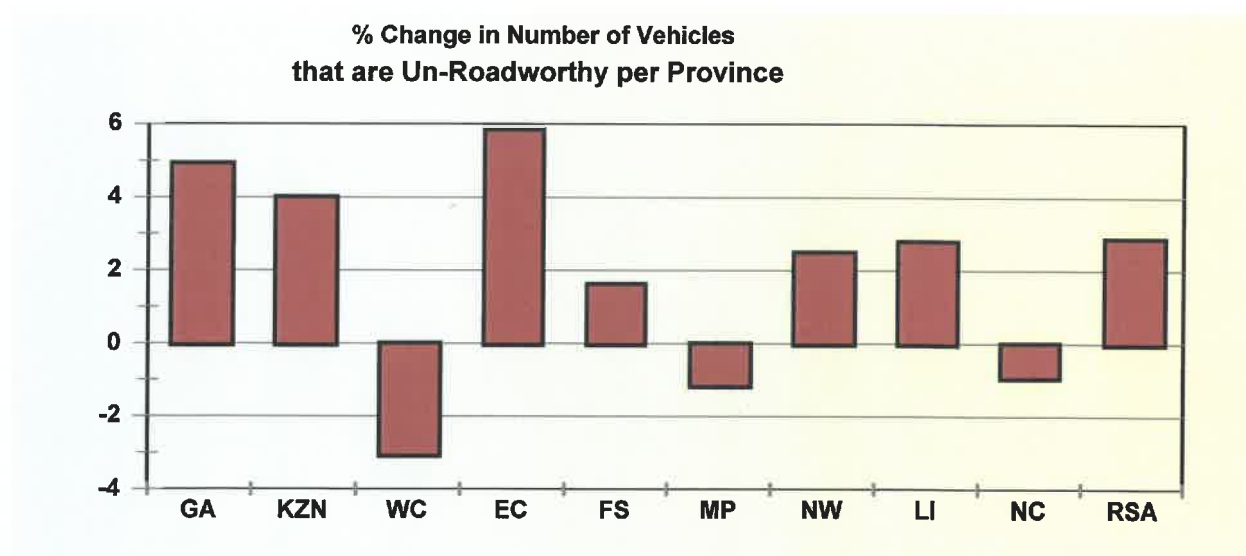


Figure 32: Percentage change in number of vehicles that are un-roadworthy per province

The information in the table and figure above shows that with exception of Western Cape, Mpumalanga and Northern Cape other provinces recorded an increase in the number of un-roadworthy vehicles. On a percentage basis the highest increase was recorded in Eastern Cape where the number of un-roadworthy vehicles increased by 18 52 (5.84%) from 31 715 in 2018 to 33 567 at the end of December 2019.

The percentage of un-roadworthy vehicles per Province, expressed as a percentage of the total number of vehicles registered per province, is shown in the figure below.

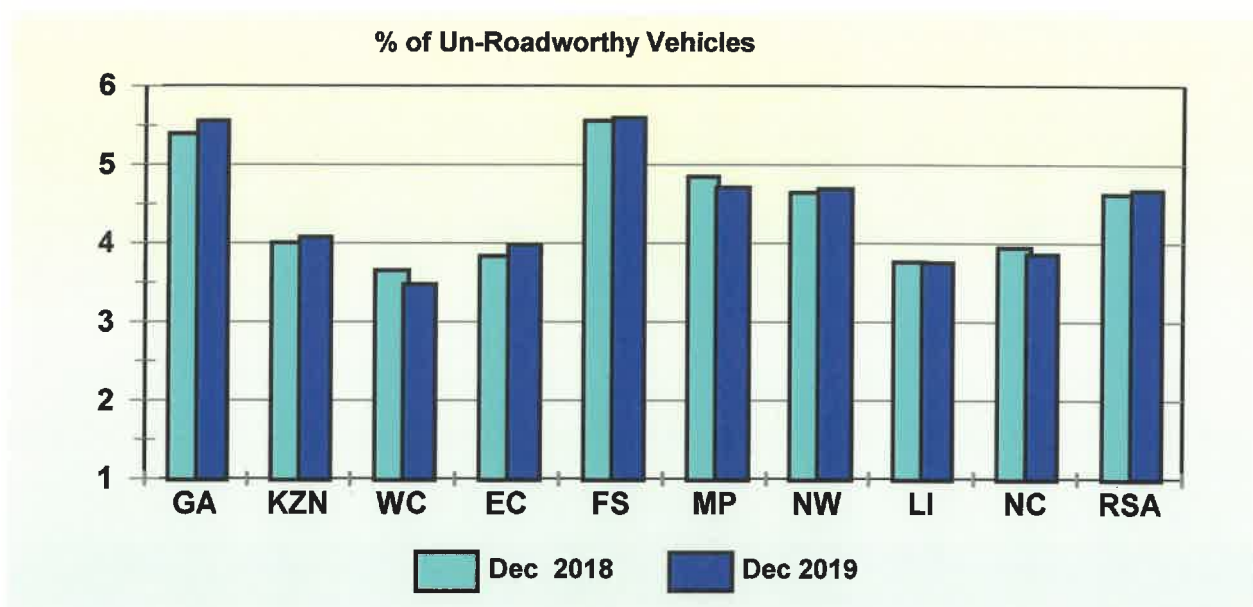


Figure 33: Percentage of un-roadworthy vehicles

3.3.3 Number of Un-Licensed Vehicles

On a national basis the number of un-licensed vehicles decreased by 44 790 (8.41%) from 532 795 vehicles as on 31 December 2018 to 488 005 vehicles as on 31 December 2019.

Detail per type of vehicle in this regard is given in the table below and the percentage of un-licensed vehicles per type of vehicle, as a percentage of the number registered, is reflected in the figure below.

Number of Un-Licensed Vehicles				
Vehicle Type	Dec 2018	Dec 2019	Change	% Change
Motorcars	314 256	292 629	-21 627	-6,88
Minibuses	16 295	15 902	-393	-2,41
Buses	1 649	1 710	61	3,70
Motorcycles	26 229	21 462	-4 767	-18,17
LDV's - Bakkies	98 062	92 698	-5 364	-5,47
Trucks	11 883	11 441	-442	-3,72
Caravans	3 893	3 071	-822	-21,11
Heavy Trailers	3 424	3 809	385	11,24
Light Trailers	46 170	36 990	-9 180	-19,88
Unknown	10 934	8 293	-2 641	-24,15
All Vehicles	532 795	488 005	-44 790	-8,41

Table 16: Number of un-licensed vehicles

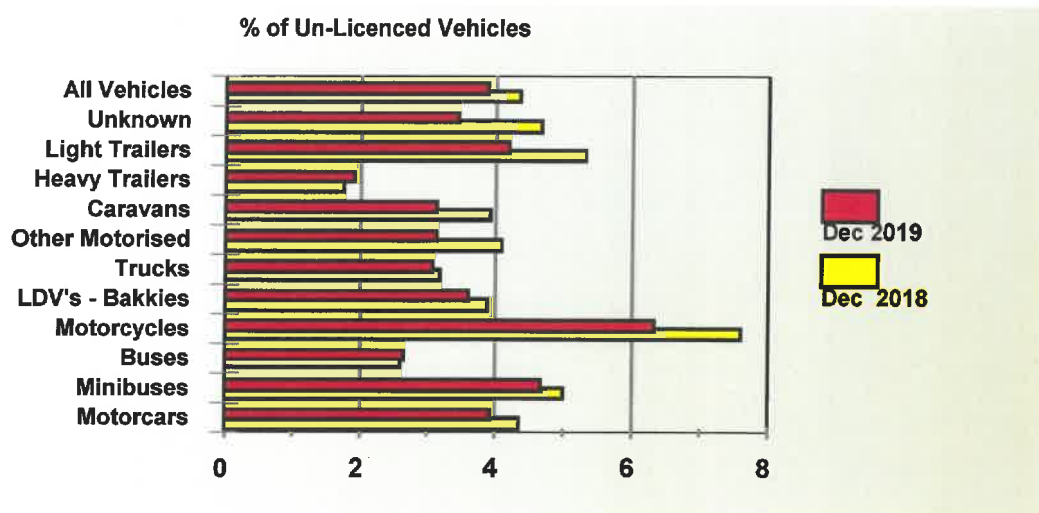


Figure 34: Percentage of un-licensed vehicles

The information in the table and figure above shows that most vehicle recorded a decrease with regard to the number of un-licensed vehicles with exception of buses and heavy trailers. On a percentage basis the vehicles with a decrease greater than 18% are motorcycles, caravans and light trailers:

Detail on the number of vehicles that are un-licensed per Province is provided in the table below and the percentage (%) change from 2018 to 2019 reflected in the figure below.

Year	GA	KZN	WC	EC	FS	MP	NW	LI	NC	RSA
Dec 2018	208 374	69 763	66 102	42 486	26 631	40 552	31 083	35 783	12 021	532 795
Dec 2019	199 032	62 315	53 870	36 934	22 632	40 670	26 984	35 468	10 100	488 005
Change	-9 342	-7 448	-12 232	-5 552	-3 999	118	-4 099	-315	-1 921	-44 790
% Change	-4,48	-10,68	-18,50	-13,07	-15,02	0,29	-13,19	-0,88	-15,98	-8,41

Table 17: Number of un-licensed vehicles

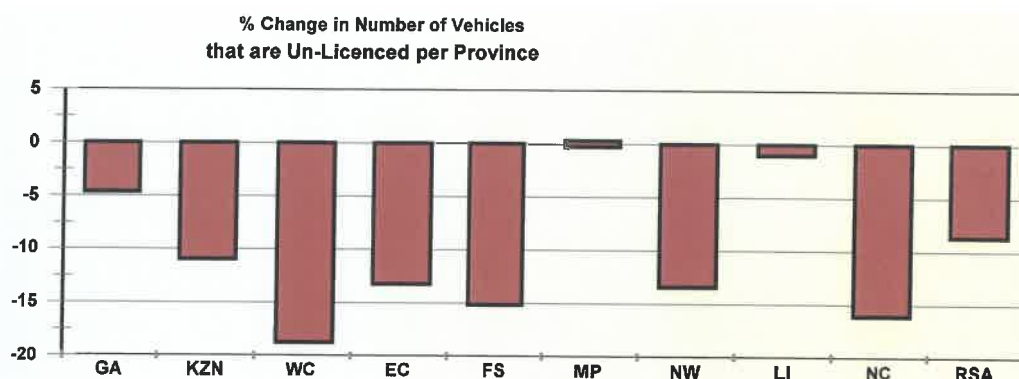


Figure 35: Percentage change in number of vehicle that are un-licensed per province

The information in the table and figure above shows that the highest decrease with regards to the number of un-licensed vehicles were recorded in Western Cape with 18.50%, followed by Northern Cape with 15.98% and Free State with 15.02%.

The percentage of un-licensed vehicles per type of vehicle, as a percentage of the number registered per Province, is reflected in the figure below.

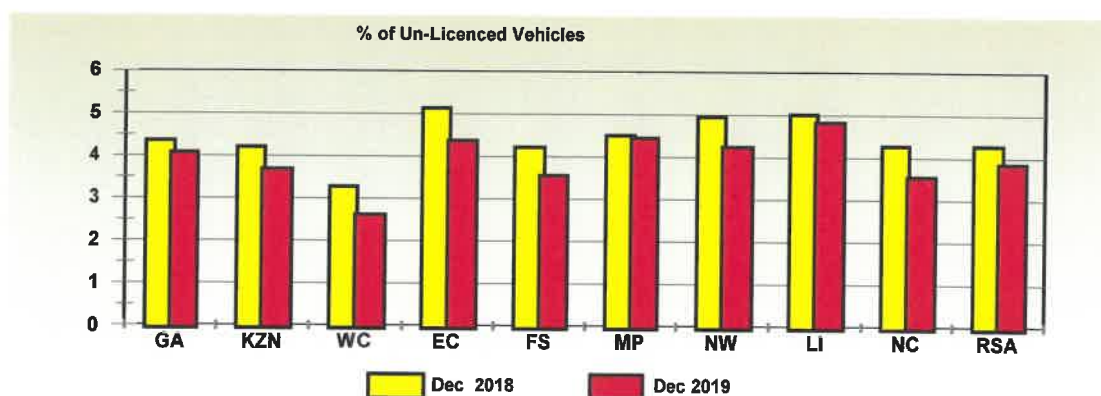


Figure 36: Percentage of un-licensed vehicles

Detailed information on the number of un-roadworthy and un-licensed vehicles per type of vehicle per Province is provided in the tables under **Appendix B**.

4 Driver Population

4.1 Learner Driving Licences

The number of learner driving licences issued decreased by 1 759 (0.15%) from 1 171 788 on 31 December 2018 to 1 170 029 on 31 December 2019. Detail on the number of learner driving licences issued per category is given in table below and graphically reflected in the figure below.

Category	Dec 2018	Dec 2019	Change	% Change
1	39 688	38 971	-717	-1,81
2	238 702	231 752	-6 950	-2,91
3	893 398	899 306	5 908	0,66
Total	1 171 788	1 170 029	-1 759	-0,15

Table 18: Number of learner licences issued

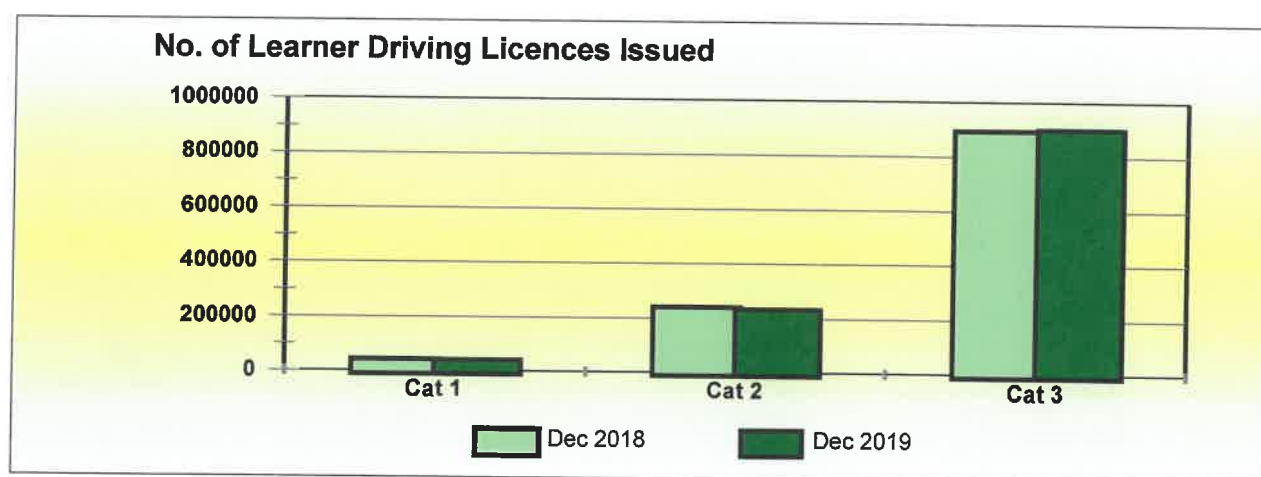


Figure 37: Number of learner licenses issues

Provincial information in this regard is given in the table below and the percentage change per Province over the 12-month period is reflected in the figure below.

Year	GA	KZ	WC	EC	FS	MP	NW	LI	NC	RSA
Dec 2018	331 686	190 755	180 998	99 574	67 847	104 965	60 808	105 836	29 319	1 171 788
Dec 2019	349 994	189 685	173 645	100 219	65 557	105 485	61 133	96 213	28 098	1 170 029
Change	18 308	-1 070	-7 353	645	-2 290	520	325	-9 623	-1 221	-1 759
% Change	5,52	-0,56	-4,06	0,65	-3,38	0,50	0,53	-9,09	-4,16	-0,15

Table 19: Number of learners licences issued per province

With exception of Gauteng, Eastern Cape, Mpumalanga and North West, other provinces recorded a decrease with regards to the number of Learner Licences issued. The highest decrease was recorded for Limpopo with 9.09% followed by Northern Cape with 4.16%.

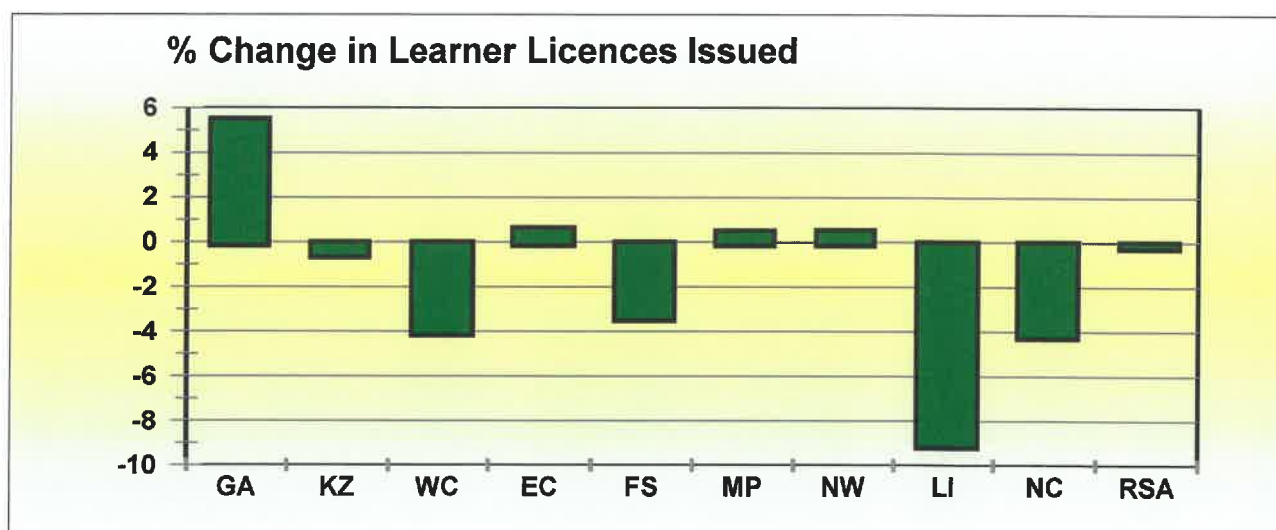


Figure 38: Percentage change in learner licenses issued per province

4.2 Driving Licences Issued and Expired

4.4.2 Number of Driving Licences Issued

The number of driving licences issued increased by 491 744 (3.77%) from 13 055 317 on 31 December 2018 to 13 547 061 as of 31 December 2019. Details on the number of driving licences issued per category is given in table and graphically reflected in the figure below.

Category	Dec 2018	Dec 2019	Change	% Change
A	485 418	492 545	7 127	1,47
A1	122 642	122 599	-43	-0,04
B	2 943 761	3 056 535	112 774	3,83
C	23 551	24 194	643	2,73
C1	4 168 879	4 494 607	325 728	7,81
EB	3 636 856	3 641 023	4 167	0,11
EC	1 087 803	1 130 558	42 755	3,93
EC1	586 407	585 000	-1 407	-0,24
Total	13 055 317	13 547 061	491 744	3,77

Table 20: Number of driving licences issued

Driving licences:

A	Motorcycle > 125 cub.cm	A1	Motorcycle < 125 cub.cm	B	Motor vehicle < 3,5000 kg
C	Motorvehicle > 16,000 kg	C1	Motor vehicle 3,500 – 16,000 kg	EB	Articulated motor vehicle <16,000 kg
		EC	Articulated vehicle > 16,000 kg	EC1	Articulated vehicle 3,500 – 16,000 kg

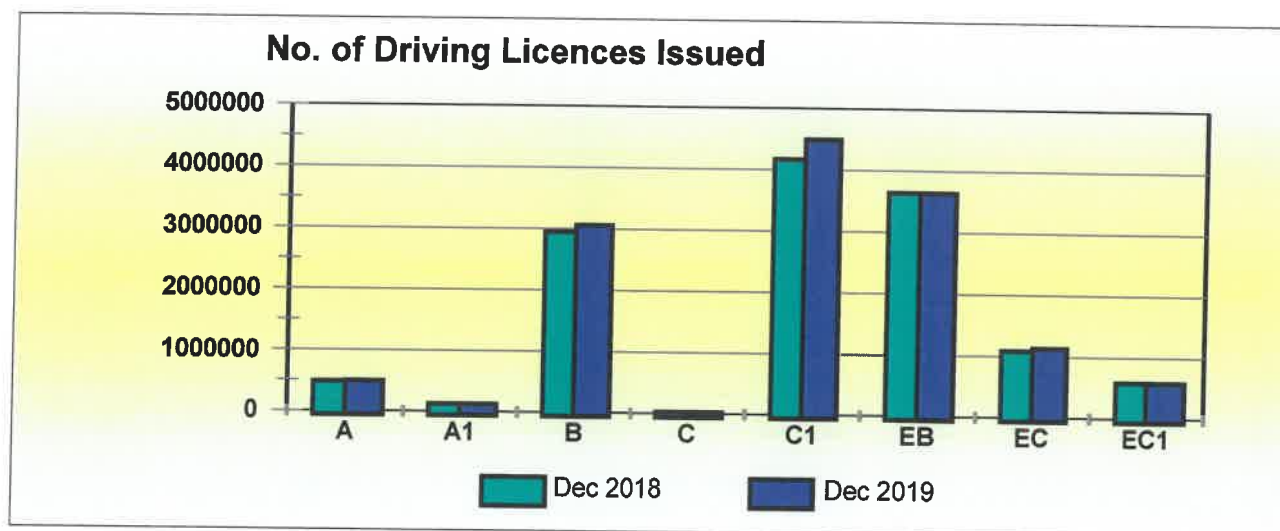


Figure 39: Number of driving licenses issued

The information contained in the table above depict that the highest percentage change was recorded for Categories C1, B, C and EC with percentages of 7.81%, 3.83%, 2.73% and 3.93% respectively.

The number and percentage (%) of driving licences issued per category at the end of December 2019 is reflected in the table below.

Category	Description	Number	%
A	Motorcycle < 125 cub.cm	492 545	3,64
A1	Motorcycle > 125 cub.cm	122 599	0,90
B	Motor vehicle < 3,5000 kg	3 056 535	22,56
C	Articulated motor vehicle <16,000 kg	24 194	0,18
C1	Motor vehicle 3,500 - 16,000 kg	4 494 607	33,18
EB	Articulated vehicle 3,500 - 16,000 kg	3 641 023	26,88
EC	Motorvehicle > 16,000 kg	1 130 558	8,35
EC1	Articulated vehicle > 16,000 kg	585 000	4,32
Total		13 547 061	100

Table 21: Number and percentage of driving licences issued per category

Provincial information in this regard is given in the table below and the percentage change with regard to all licences issued per province is reflected in the figure below.

Year	GA	KZ	WC	EC	FS	MP	NW	LI	NC	RSA
Dec 2018	4 533 979	2 094 835	1 987 803	956 440	651 552	962 199	620 560	1 004 930	243 019	13 055 317
Dec 2019	4 718 545	2 174 131	2 044 146	991 293	669 565	1 008 404	640 353	1 049 458	251 166	13 547 061
Change	184 566	79 296	56 343	34 853	18 013	46 205	19 793	44 528	8 147	491 744
% Change	4,07	3,79	2,83	3,64	2,76	4,80	3,19	4,43	3,35	3,77

Table 22: Number of driving licences issued per province

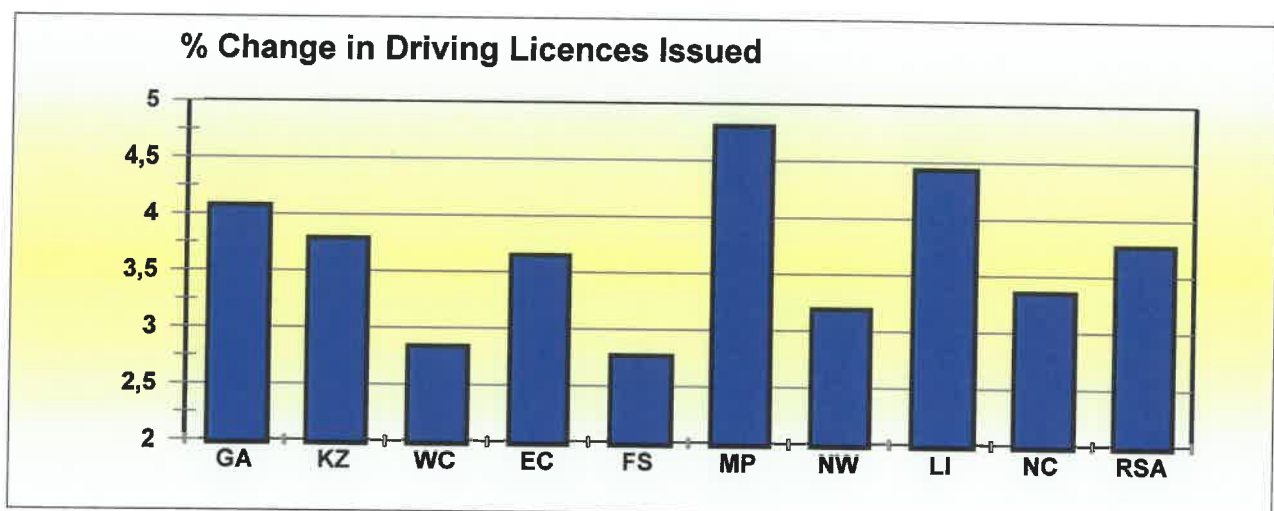


Figure 40: Percentage change in driving licenses issued

4.3 Number of Driving Licence Cards Expired

The information in Table below shows that as on 31 December 2019 there were 2 740 692 expired driving licence cards recorded on the National Traffic Information System (NaTIS). This figure represents 20.23% of all driving licences issued. This information is also reflected in the figure below.

Category	GA	KZ	WC	EC	FS	MP	NW	LI	NC	RSA
On system	4 718 545	2 174 131	2 044 146	991 293	669 565	1 008 404	640 353	1 049 458	251 166	13 547 061
Not expired	3 806 368	1 701 361	1 645 698	734 230	513 291	825 942	514 272	862 033	203 174	10 806 369
Expired	912 177	472 770	398 448	257 063	156 274	182 462	126 081	187 425	47 992	2 740 692
% Expired	19,33	21,75	19,49	25,93	23,34	18,09	19,69	17,86	19,11	20,23

Table 23: Number of driving licences cards issued and expired per province 2018

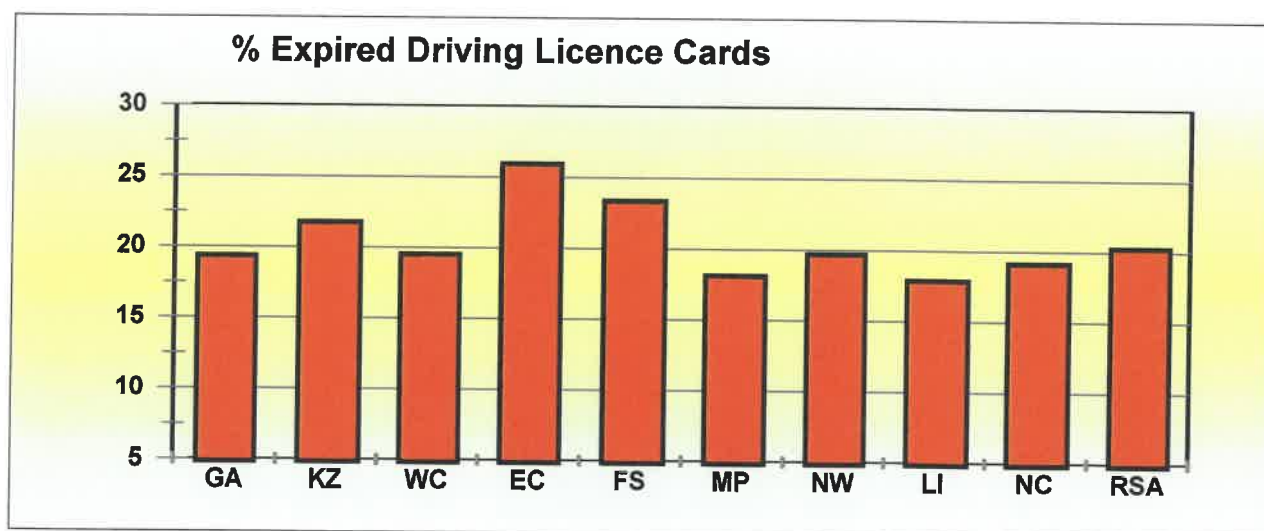


Figure 41: Percentage expired driving license cards

4.4.2 Professional Driving Permits Issued and Expired

4.4.1 Number of Professional Driving Permits Issued

The number of Professional Driving Permits (PrDP's) issued increased by 38 809 (3.59%) from 1 081 051 on 31 December 2018 to 1 119 860 on 31 December 2019. Detail on the number of PrDPs issued per category is given in table below and graphically reflected in the figure below.

Category	Dec 2018	Dec 2019	Change	% Change
G	8 527	7 980	-547	-6,41
P G	1 030 056	1 067 195	37 139	3,61
D G	166	131	-35	-21,08
D P G	42 302	44 554	2 252	5,32
Total	1 081 051	1 119 860	38 809	3,59

Table 24: Number of PrDP's issued

Professional Driving Permits (PrDPs)

G: Goods

P: Passengers

D: Dangerous goods

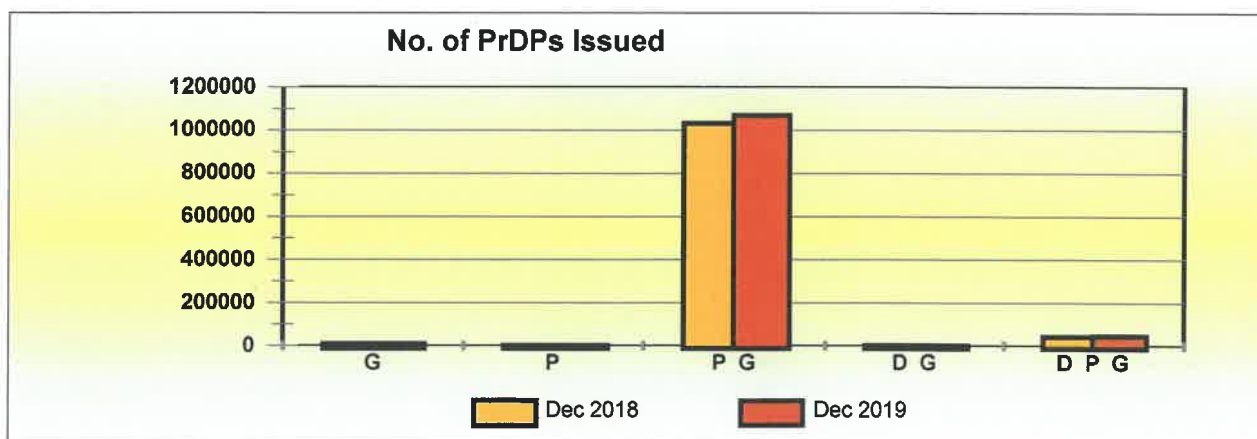


Figure 42: Number of PrDP's issued

Provincial information in this regard is given in the table below and the percentage change with regard to all categories of PrDP's issued per Province is reflected in the figure below.

Year	GA	KZ	WC	EC	FS	MP	NW	LI	NC	RSA
Dec 2018	288 966	192 936	153 864	88 052	66 675	104 531	53 208	107 670	25 149	1 081 051
Dec 2019	301 146	198 490	161 240	93 115	67 620	108 872	54 333	109 210	25 834	1 119 860
Change	12 180	5 554	7 376	5 063	945	4 341	1 125	1 540	685	38 809
% Change	4,22	2,88	4,79	5,75	1,42	4,15	2,11	1,43	2,72	3,59

Table 25: Number of professional driving permits (PrDP's) issued per province

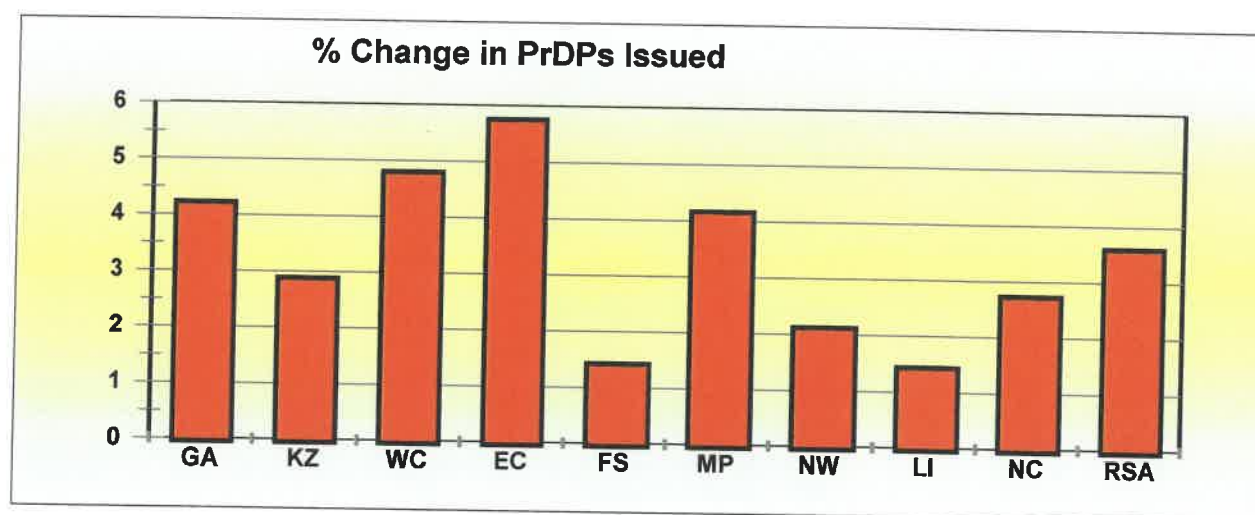


Figure 43: Percentage in PrDP's issued

4.4.2 Number of Expired PrDPs

The information in the table below shows that on 31 December 2019 there were 498 731 expired Professional Driving Permits (PrDPs) recorded on the National Traffic Information System (NaTIS). This figure represents 44.54% of all PrDPs issued. This information is also reflected in the figure below.

Category	GA	KZ	WC	EC	FS	MP	NW	LI	NC	RSA
On system	301 146	198 490	161 240	93 115	67 620	108 872	54 333	109 210	25 834	1 119 860
Not expired	152 932	108 379	94 659	53 813	44 073	63 152	28 326	62 006	13 789	621 129
Expired	148 214	90 111	66 581	39 302	23 547	45 720	26 007	47 204	12 045	498 731
% Expired	49,22	45,40	41,29	42,21	34,82	41,99	47,87	43,22	46,62	44,54

Table 26: Number of professional driving permits (PrDP's) issued and expired per province 2018

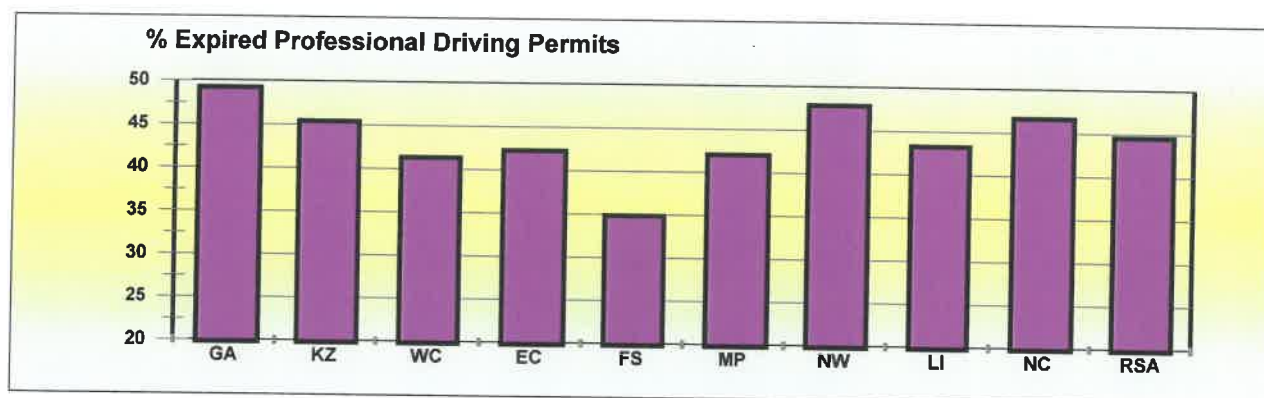


Figure 44: Percentage expired professional driving permits

Provinces that recorded the highest increase of expired PrDPs were recorded in Gauteng and North West with 49.22% and 47.87% respectively.

Detailed information on the number of learner licences, driving licences and PrDPs per Province is provided in the tables under **Appendix C**.

Reviewed and Supported by



.....

Mr Kevin Kara-Vala

EM: RTI & T

Date:

Recommended by



.....

Adv. Makhosini Msibi

CEO

30/01/2020
.....

Date

Approved by



.....

Mr Zola Majavu CD (SA)

Chairman of the Board

30/01/2020
.....

Date

APPENDIX A

Dec 2018	Number of Registered Vehicles per Province									Total RSA
	GA	KZ	WC	EC	FS	MP	NW	LI	NC	
Motorised Veh's										
Motorcars	3 054 378	1 004 449	1 283 169	459 546	316 238	433 542	321 994	338 247	129 177	7 340 740
Minibuses	127 286	54 994	36 885	24 473	12 786	24 338	19 598	24 174	5 489	330 023
Buses	20 985	7 996	7 186	4 400	3 194	8 182	4 209	6 764	1 736	64 652
Motorcycles	140 792	31 191	85 496	21 798	18 618	18 479	13 145	9 096	8 002	346 617
LDV's - Bakkies	836 364	364 622	333 094	205 976	131 274	220 691	153 821	232 217	79 788	2 557 847
Trucks	138 528	49 141	44 723	22 306	21 862	47 791	17 641	25 917	9 181	377 090
Other & Unkwn	38 521	33 629	41 559	18 150	37 222	29 318	23 970	18 467	10 008	250 843
Sub-Total	4 356 854	1 546 022	1 832 112	756 649	541 194	782 341	554 378	654 882	243 381	11 267 812
Towed Veh's										
Caravans	38 434	7 122	18 137	5 159	7 486	10 070	6 280	5 489	2 729	100 906
Heavy Trailers	61 543	23 475	22 268	7 141	18 234	40 475	11 034	9 486	5 754	199 410
Light Trailers	336 276	82 536	148 069	57 593	63 351	65 448	53 959	42 939	29 166	879 337
Unknown	2 396	1 497	2 205	1 528	1 943	1 884	2 196	1 197	670	15 515
Sub-Total	438 649	114 630	190 679	71 421	91 014	117 877	73 469	59 111	38 319	1 195 168
All Vehicles	4 795 503	1 660 652	2 022 790	828 069	632 208	900 217	627 847	713 993	281 700	12 462 979

Dec 2019	Province									Total RSA
	GA	KZ	WC	EC	FS	MP	NW	LI	NC	
Motorised Veh's										
Motorcars	3 119 017	1 027 531	1 306 677	471 061	321 190	444 760	328 427	349 302	130 983	7 498 948
Minibuses	131 501	56 992	38 208	25 669	13 080	25 483	20 389	25 580	5 833	342 735
Buses	20 485	8 081	7 274	4 618	3 347	8 502	4 216	6 919	1 787	65 229
Motorcycles	139 648	30 639	85 785	21 604	18 177	18 045	12 768	8 949	7 776	343 391
LDV's - Bakkies	853 193	372 801	339 761	209 526	132 647	225 589	156 292	239 029	80 907	2 609 745
Trucks	140 296	50 297	46 671	22 431	21 951	46 222	17 355	26 459	9 028	380 710
Other & Unkwn	38 681	33 304	42 130	18 370	36 604	29 150	23 165	18 570	10 097	250 069
Sub-Total	4 442 821	1 579 645	1 866 506	773 279	546 996	797 751	562 612	674 808	246 411	11 490 827
Towed Veh's										
Caravans	37 520	6 969	18 377	5 140	7 299	9 910	6 171	5 476	2 728	99 590
Heavy Trailers	64 166	24 147	25 078	7 368	18 918	40 358	11 058	10 104	5 720	206 917
Light Trailers	338 939	82 864	151 158	58 307	63 449	66 511	54 373	43 891	29 693	889 185
Unknown	2 303	1 450	2 180	1 520	1 888	1 822	2 107	1 170	672	15 110
Sub-Total	442 928	115 430	196 793	72 335	91 554	118 601	73 709	60 641	38 813	1 210 802
All Vehicles	4 885 748	1 695 075	2 063 299	845 614	638 550	916 351	636 321	735 448	285 223	12 701 629

% Change Dec 2019 - 2020	Number of Registered Vehicles per Province									Total RSA
	GA	KZ	WC	EC	FS	MP	NW	LI	NC	
Motorised Vehicles										
Motorcars	2,12	2,30	1,83	2,51	1,57	2,59	2,00	3,27	1,40	2,16
Minibuses	3,31	3,63	3,59	4,89	2,30	4,70	4,04	5,82	6,27	3,85
Buses	-2,38	1,06	1,22	4,95	4,79	3,91	0,17	2,29	2,94	0,89
Motorcycles	-0,81	-1,77	0,34	-0,89	-2,37	-2,35	-2,87	-1,62	-2,82	-0,93
LDV's - Bakkies	2,01	2,24	2,00	1,72	1,05	2,22	1,61	2,93	1,40	2,03
Trucks	1,28	2,35	4,36	0,56	0,41	-3,28	-1,62	2,09	-1,67	0,96
Other & Unknown	0,41	-0,97	1,38	1,21	-1,66	-0,57	-3,36	0,56	0,88	-0,31
Sub-Total	1,97	2,17	1,88	2,20	1,07	1,97	1,49	3,04	1,24	1,98
Towed Vehicles										
Caravans	-2,38	-2,15	1,32	-0,37	-2,50	-1,59	-1,74	-0,24	-0,04	-1,30
Heavy Trailers	4,26	2,86	12,62	3,18	3,75	-0,29	0,22	6,51	-0,59	3,76
Light Trailers	0,79	0,40	2,09	1,24	0,15	1,62	0,77	2,22	1,81	1,12
Unknown	-3,90	-3,14	-1,11	-0,49	-2,83	-3,29	-4,05	-2,30	0,22	-2,61
Sub-Total	0,98	0,70	3,21	1,28	0,59	0,61	0,33	2,59	1,29	1,31
All Vehicles	1,88	2,07	2,00	2,12	1,00	1,79	1,35	3,00	1,25	1,91



APPENDIX B-1

Number of Un-Roadworthy Vehicles										
Dec 2018	GA	KZ	WC	EC	FS	MP	NW	LI	NC	RSA
Motorised Vehicles										
Motorcars	139 775	30 631	40 681	14 571	13 797	15 146	11 676	9 230	3 552	279 059
Minibuses	19 102	5 551	3 004	2 397	1 639	2 393	2 214	2 239	526	39 065
Buses	3 147	839	697	495	340	814	482	609	311	7 734
Motorcycles	17 107	3 466	6 286	1 684	2 045	2 973	1 769	1 269	782	37 381
LDV's - Bakkies	39 015	11 363	9 859	5 789	4 662	6 937	4 844	5 563	1 761	89 793
Trucks	19 386	6 101	4 408	2 969	3 915	5 565	2 776	3 413	1 806	50 339
Other & Unkwn	2 956	2 267	1 956	1 310	3 485	2 894	2 017	1 921	756	19 562
Sub-Total	240 488	60 218	66 891	29 215	29 883	36 722	25 778	24 244	9 494	522 933
Towed Vehicles										
Caravans	1 349	318	592	144	348	441	250	224	120	3 786
Heavy Trailers	6 919	2 615	1 984	816	2 411	4 117	1 233	956	736	21 787
Light Trailers	9 529	3 129	4 296	1 450	2 375	2 202	1 747	1 324	706	26 758
Unknown	131	143	80	90	111	132	119	63	40	909
Sub-Total	17 928	6 205	6 952	2 500	5 245	6 892	3 349	2 567	1 602	53 240
All Vehicles	258 416	66 423	73 843	31 715	35 128	43 614	29 127	26 811	11 096	576 173
Dec 2019	GA	KZ	WC	EC	FS	MP	NW	LI	NC	RSA
Motorised Vehicles										
Motorcars	147 346	31 627	37 364	15 400	14 030	14 835	12 079	9 376	3 468	285 525
Minibuses	20 079	5 892	3 276	2 742	1 765	2 525	2 397	2 342	559	41 577
Buses	3 222	948	717	509	396	870	487	641	284	8 074
Motorcycles	17 025	3 436	6 441	1 686	2 036	2 897	1 754	1 248	783	37 306
LDV's - Bakkies	40 550	11 766	9 820	6 224	4 745	7 101	4 907	5 773	1 770	92 656
Trucks	20 426	6 648	4 478	3 041	3 822	5 477	2 715	3 495	1 746	51 848
Other & Unkwn	3 049	2 361	2 068	1 417	3 586	2 947	2 083	2 072	744	20 327
Sub-Total	251 697	62 678	64 164	31 019	30 380	36 652	26 422	24 947	9 354	537 313
Towed Vehicles										
Caravans	1 422	319	610	144	325	422	240	205	114	3 801
Heavy Trailers	7 814	2 704	2 163	800	2 396	3 668	1 203	978	738	22 464
Light Trailers	10 123	3 244	4 567	1 513	2 492	2 273	1 873	1 376	749	28 210
Unknown	112	142	88	91	104	124	114	52	40	867
Sub-Total	19 471	6 409	7 428	2 548	5 317	6 487	3 430	2 611	1 641	55 342
All Vehicles	271 168	69 087	71 592	33 567	35 697	43 139	29 852	27 558	10 995	592 655
% Change	GA	KZ	WC	EC	FS	MP	NW	LI	NC	RSA
Motorised Vehicles										
Motorcars	5,42	3,25	-8,15	5,69	1,69	-2,05	3,45	1,58	-2,36	2,32
Minibuses	5,11	6,14	9,05	14,39	7,69	5,52	8,27	4,60	6,27	6,43
Buses	2,38	12,99	2,87	2,83	16,47	6,88	1,04	5,25	-8,68	4,40
Motorcycles	-0,48	-0,87	2,47	0,12	-0,44	-2,56	-0,85	-1,65	0,13	-0,20
LDV's - Bakkies	3,93	3,55	-0,40	7,51	1,78	2,36	1,30	3,77	0,51	3,19
Trucks	5,36	8,97	1,59	2,43	-2,38	-1,58	-2,20	2,40	-3,32	3,00
Other & Unkwn	3,15	4,15	5,73	8,17	2,90	1,83	3,27	7,86	-1,59	3,91
Sub-Total	4,66	4,09	-4,08	6,17	1,66	-0,19	2,50	2,90	-1,47	2,75
Towed Vehicles										
Caravans	5,41	0,31	3,04	0,00	-6,61	-4,31	-4,00	-8,48	-5,00	0,40
Heavy Trailers	12,94	3,40	9,02	-1,96	-0,62	-10,91	-2,43	2,30	0,27	3,11
Light Trailers	6,23	3,68	6,31	4,34	4,93	3,22	7,21	3,93	6,09	5,43
Unknown	-14,50	-0,70	10,00	1,11	-6,31	-6,06	-4,20	-17,46	0,00	-4,62
Sub-Total	8,61	3,29	6,85	1,92	1,37	-5,88	2,42	1,71	2,43	3,95
All Vehicles	4,93	4,01	-3,05	5,84	1,62	-1,09	2,49	2,79	-0,91	2,86

APPENDIX B-2

Number of Un-Licensed Vehicles										
Dec 2018	GA	KZ	WC	EC	FS	MP	NW	LI	NC	RSA
Motorised Vehicles										
Motorcars	131 227	41 325	42 637	23 806	14 297	21 129	16 304	17 519	6 012	314 256
Minibuses	7 817	2 188	1 306	1 231	522	963	1 010	1 013	245	16 295
Buses	579	145	103	148	71	202	173	144	84	1 649
Motorcycles	11 332	2 646	5 055	1 727	1 329	1 521	1 164	864	591	26 229
LDV's - Bakkies	30 674	14 377	8 792	10 037	4 734	9 172	6 611	10 852	2 813	98 062
Trucks	4 040	1 476	799	840	626	1 799	754	1 241	308	11 883
Other & Unkwn	1 366	1 413	900	827	1 344	1 238	1 147	907	362	9 504
Sub-Total	187 035	63 570	59 592	38 616	22 923	36 024	27 163	32 540	10 415	477 878
Towed Vehicles										
Caravans	1 497	315	534	214	296	361	279	269	128	3 893
Heavy Trailers	1 033	419	217	136	275	691	288	258	107	3 424
Light Trailers	18 576	5 272	5 615	3 386	2 982	3 327	3 103	2 600	1 309	46 170
Unknown	233	187	144	134	155	149	250	116	62	1 430
Sub-Total	21 339	6 193	6 510	3 870	3 708	4 528	3 920	3 243	1 606	54 917
All Vehicles	208 374	69 763	66 102	42 486	26 631	40 552	31 083	35 783	12 021	532 795
Dec 2019	GA	KZ	WC	EC	FS	MP	NW	LI	NC	RSA
Motorised Vehicles										
Motorcars	126 480	37 033	35 359	21 496	12 975	21 484	14 762	17 612	5 428	292 629
Minibuses	7 633	2 186	1 216	1 124	547	994	926	1 051	225	15 902
Buses	551	206	93	126	74	231	177	192	60	1 710
Motorcycles	9 877	2 007	3 942	1 203	993	1 380	877	728	455	21 462
LDV's - Bakkies	30 148	13 534	7 366	9 166	3 971	9 212	5 930	11 032	2 339	92 698
Trucks	3 894	1 419	741	713	531	2 015	636	1 235	257	11 441
Other & Unkwn	1 232	1 126	614	556	871	1 076	796	804	197	7 272
Sub-Total	179 815	57 511	49 331	34 384	19 962	36 392	24 104	32 654	8 961	443 114
Towed Vehicles										
Caravans	1 303	212	305	141	237	334	223	237	79	3 071
Heavy Trailers	1 228	498	313	115	178	895	252	239	91	3 809
Light Trailers	16 492	3 974	3 842	2 204	2 138	2 902	2 228	2 281	929	36 990
Unknown	194	120	79	90	117	147	177	57	40	1 021
Sub-Total	19 217	4 804	4 539	2 550	2 670	4 278	2 880	2 814	1 139	44 891
All Vehicles	199 032	62 315	53 870	36 934	22 632	40 670	26 984	35 468	10 100	488 005
% Change	GA	KZ	WC	EC	FS	MP	NW	LI	NC	RSA
Motorised Vehicles										
Motorcars	-3,62	-10,39	-17,07	-9,70	-9,25	1,68	-9,46	0,53	-9,71	-6,88
Minibuses	-2,35	-0,09	-6,89	-8,69	4,79	3,22	-8,32	3,75	-8,16	-2,41
Buses	-4,84	42,07	-9,71	-14,86	4,23	14,36	2,31	33,33	-28,57	3,70
Motorcycles	-12,84	-24,15	-22,02	-30,34	-25,28	-9,27	-24,66	-15,74	-23,01	-18,17
LDV's - Bakkies	-1,71	-5,86	-16,22	-8,68	-16,12	0,44	-10,30	1,66	-16,85	-5,47
Trucks	-3,61	-3,86	-7,26	-15,12	-15,18	12,01	-15,65	-0,48	-16,56	-3,72
Other & Unkwn	-9,81	-20,31	-31,78	-32,77	-35,19	-13,09	-30,60	-11,36	-45,58	-23,48
Sub-Total	-3,86	-9,53	-17,22	-10,96	-12,92	1,02	-11,26	0,35	-13,96	-7,27
Towed Vehicles										
Caravans	-12,96	-32,70	-42,88	-34,11	-19,93	-7,48	-20,07	-11,90	-38,28	-21,11
Heavy Trailers	18,88	18,85	44,24	-15,44	-35,27	29,52	-12,50	-7,36	-14,95	11,24
Light Trailers	-11,22	-24,62	-31,58	-34,91	-28,30	-12,77	-28,20	-12,27	-29,03	-19,88
Unknown	-16,74	-35,83	-45,14	-32,84	-24,52	-1,34	-29,20	-50,86	-35,48	-28,60
Sub-Total	-9,94	-22,43	-30,28	-34,11	-27,99	-5,52	-26,53	-13,23	-29,08	-18,26
All Vehicles	-4,48	-10,68	-18,50	-13,07	-15,02	0,29	-13,19	-0,88	-15,98	-8,41

APPENDIX B-3

Number of Both Un-Roadworthy & Un-Licensed Vehicles										
Dec 2018	GA	KZ	WC	EC	FS	MP	NW	LI	NC	RSA
Motorised Vehicles										
Motorcars	12 101	3 913	4 878	2 717	2 165	2 581	1 610	1 905	693	32 563
Minibuses	2 161	643	344	296	190	272	283	302	60	4 551
Buses	151	44	49	40	21	52	45	49	37	488
Motorcycles	2 155	523	782	246	228	378	265	178	108	4 863
LDV's - Bakkies	3 037	1 443	1 112	1 026	605	1 094	611	1 061	255	10 244
Trucks	970	360	267	203	282	452	239	323	144	3 240
Other & Unkwn	227	185	79	87	184	195	150	137	56	1 300
Sub-Total	20 802	7 111	7 511	4 615	3 675	5 024	3 203	3 955	1 353	57 249
Towed Vehicles										
Caravans	119	35	47	20	34	36	34	29	14	368
Heavy Trailers	187	86	46	34	63	156	67	43	31	713
Light Trailers	1 028	350	382	189	216	224	172	175	54	2 790
Unknown	7	17	9	5	7	5	15	6	7	78
Sub-Total	1 341	488	484	248	320	421	288	253	106	3 949
All Vehicles	22 143	7 599	7 995	4 863	3 995	5 445	3 491	4 208	1 459	61 198
Dec 2019	GA	KZ	WC	EC	FS	MP	NW	LI	NC	RSA
Motorised Vehicles										
Motorcars	12 546	3 874	4 632	2 822	2 091	2 683	1 610	1 933	674	32 865
Minibuses	2 342	613	339	294	182	316	304	288	65	4 743
Buses	173	66	41	43	27	67	44	37	22	520
Motorcycles	1 966	434	674	229	202	353	217	161	81	4 317
LDV's - Bakkies	3 200	1 374	1 072	1 055	496	1 156	579	1 037	249	10 218
Trucks	974	371	248	184	210	506	201	349	105	3 148
Other & Unkwn	199	150	80	79	181	151	136	106	33	1 115
Sub-Total	21 400	6 882	7 086	4 706	3 389	5 232	3 091	3 911	1 229	56 926
Towed Vehicles										
Caravans	101	24	38	12	27	34	23	29	10	298
Heavy Trailers	256	99	92	23	47	199	63	63	34	876
Light Trailers	1 081	285	324	131	185	226	162	139	56	2 589
Unknown	14	12	3	8	8	12	11	4	5	77
Sub-Total	1 452	420	457	174	267	471	259	235	105	3 840
All Vehicles	22 852	7 302	7 543	4 880	3 656	5 703	3 350	4 146	1 334	60 766
% Change	GA	KZ	WC	EC	FS	MP	NW	LI	NC	RSA
Motorised Vehicles										
Motorcars	3,68	-1,00	-5,04	3,86	-3,42	3,95	0,00	1,47	-2,74	0,93
Minibuses	8,38	-4,67	-1,45	-0,68	-4,21	16,18	7,42	-4,64	8,33	4,22
Buses	14,57	50,00	-16,33	7,50	28,57	28,85	-2,22	-24,49	-40,54	6,56
Motorcycles	-8,77	-17,02	-13,81	-6,91	-11,40	-6,61	-18,11	-9,55	-25,00	-11,23
LDV's - Bakkies	5,37	-4,78	-3,60	2,83	-18,02	5,67	-5,24	-2,26	-2,35	-0,25
Trucks	0,41	3,06	-7,12	-9,36	-25,53	11,95	-15,90	8,05	-27,08	-2,84
Other & Unkwn	-12,33	-18,92	1,27	-9,20	-1,63	-22,56	-9,33	-22,63	-41,07	-14,23
Sub-Total	2,87	-3,22	-5,66	1,97	-7,78	4,14	-3,50	-1,11	-9,16	-0,56
Towed Vehicles										
Caravans	-15,13	-31,43	-19,15	-40,00	-20,59	-5,56	-32,35	0,00	-28,57	-19,02
Heavy Trailers	36,90	15,12	100,00	-32,35	-25,40	27,56	-5,97	46,51	9,68	22,86
Light Trailers	5,16	-18,57	-15,18	-30,69	-14,35	0,89	-5,81	-20,57	3,70	-7,20
Unknown	100,00	-29,41	-66,67	60,00	14,29	140,00	-26,67	-33,33	-28,57	-1,28
Sub-Total	8,28	-13,93	-5,58	-29,84	-16,56	11,88	-10,07	-7,11	-0,94	-2,76
All Vehicles	3,20	-3,91	-5,65	0,35	-8,49	4,74	-4,04	-1,47	-8,57	-0,71

APPENDIX C-1

Dec 2018	Number of Learners Licences Issued per Province									
Category	GA	KZ	WC	EC	FS	MP	NW	LI	NC	RSA
1	13 286	3 413	12 504	2 515	2 132	2 088	1 461	1 318	971	39 688
2	63 263	30 769	79 343	24 514	14 283	8 246	8 544	4 932	4 808	238 702
3	255 137	156 573	89 151	72 545	51 432	94 631	50 803	99 586	23 540	893 398
Total	331 686	190 755	180 998	99 574	67 847	104 965	60 808	105 836	29 319	1 171 788
Dec 2019	Number of Learners Licences Issued per Province									
Category	GA	KZ	WC	EC	FS	MP	NW	LI	NC	RSA
1	13 317	3 524	11 543	2 323	2 155	2 253	1 544	1 397	915	38 971
2	64 070	30 036	75 318	24 116	13 549	7 711	7 911	4 221	4 820	231 752
3	272 607	156 125	86 784	73 780	49 853	95 521	51 678	90 595	22 363	899 306
Total	349 994	189 685	173 645	100 219	65 557	105 485	61 133	96 213	28 098	1 170 029
% Change	Number of Learners Licences Issued per Province									
Category	GA	KZ	WC	EC	FS	MP	NW	LI	NC	RSA
1	0,23	3,25	-7,69	-7,63	1,08	7,90	5,68	5,99	-5,77	-1,81
2	1,28	-2,38	-5,07	-1,62	-5,14	-6,49	-7,41	-14,42	0,25	-2,91
3	6,85	-0,29	-2,66	1,70	-3,07	0,94	1,72	-9,03	-5,00	0,66
Total	5,52	-0,56	-4,06	0,65	-3,38	0,50	0,53	-9,09	-4,16	-0,15

Learner Licences :

Category 1 : Motorcycle

Category 2 : Light Motor Vehicle

Category 3 : Heavy Motor Vehicle

APPENDIX C-2

Dec 2018	Number of Driving Licences Issued per Province									
Category	GA	KZ	WC	EC	FS	MP	NW	LI	NC	RSA
A	177 092	61 516	117 430	34 985	26 427	23 185	19 932	15 307	9 544	485 418
A1	43 602	13 008	28 904	9 168	8 883	6 548	6 299	3 823	2 407	122 642
B	1 081 943	475 840	619 416	243 678	148 593	124 584	118 545	77 656	53 506	2 943 761
C	4 797	4 923	5 099	1 185	536	2 992	1 710	1 841	468	23 551
C1	1 407 298	708 543	228 071	232 779	173 456	475 570	238 978	629 691	74 493	4 168 879
EB	1 285 447	575 785	812 724	313 126	175 579	159 055	140 814	109 147	65 179	3 636 856
EC	315 101	185 544	125 909	75 138	82 981	118 166	57 341	101 606	26 017	1 087 803
EC1	218 699	69 676	50 250	46 381	35 097	52 099	36 941	65 859	11 405	586 407
Total	4 533 979	2 094 835	1 987 803	956 440	651 552	962 199	620 560	1 004 930	243 019	13 055 317
Dec 2019	Number of Driving Licences Issued per Province									
Category	GA	KZ	WC	EC	FS	MP	NW	LI	NC	RSA
A	179 516	62 114	120 324	35 460	26 547	23 399	20 034	15 532	9 619	492 545
A1	43 465	13 018	29 172	9 181	8 815	6 514	6 249	3 806	2 379	122 599
B	1 130 709	489 702	645 568	253 301	153 930	127 219	121 414	79 405	55 287	3 056 535
C	4 915	4 941	5 400	1 227	543	3 130	1 710	1 841	487	24 194
C1	1 528 345	765 129	245 315	254 146	184 467	513 321	255 556	667 894	80 434	4 494 607
EB	1 285 177	575 705	818 459	313 973	175 131	158 244	140 190	109 116	65 028	3 641 023
EC	328 483	193 968	129 765	77 522	85 178	124 548	58 695	105 866	26 533	1 130 558
EC1	217 935	69 554	50 143	46 483	34 954	52 029	36 505	65 998	11 399	585 000
Total	4 718 545	2 174 131	2 044 146	991 293	669 565	1 008 404	640 353	1 049 458	251 166	13 547 061
% Change	Number of Driving Licences Issued per Province									
Category	GA	KZ	WC	EC	FS	MP	NW	LI	NC	RSA
A	1,37	0,97	2,46	1,36	0,45	0,92	0,51	1,47	0,79	1,47
A1	-0,31	0,08	0,93	0,14	-0,77	-0,52	-0,79	-0,44	-1,16	-0,04
B	4,51	2,91	4,22	3,95	3,59	2,12	2,42	2,25	3,33	3,83
C	2,46	0,37	5,90	3,54	1,31	4,61	0,00	0,00	4,06	2,73
C1	8,60	7,99	7,56	9,18	6,35	7,94	6,94	6,07	7,98	7,81
EB	-0,02	-0,01	0,71	0,27	-0,26	-0,51	-0,44	-0,03	-0,23	0,11
EC	4,25	4,54	3,06	3,17	2,65	5,40	2,36	4,19	1,98	3,93
EC1	-0,35	-0,18	-0,21	0,22	-0,41	-0,13	-1,18	0,21	-0,05	-0,24
Total	4,07	3,79	2,83	3,64	2,76	4,80	3,19	4,43	3,35	3,77

Driving Licences:

A	Motorcycle > 125 cub.cm	A1	Motorcycle < 125 cub.cm	B	Motor vehicle < 3,5000 kg
C	Motorvehicle > 16,000 kg	C1	Motor vehicle 3,500 – 16,000 kg	EB	Articulated motor vehicle <16,000 kg
		EC	Articulated vehicle > 16,000 kg	EC1	Articulated vehicle 3,500 – 16,000 kg

APPENDIX C-3

Dec 2018	Number of Professional Driving Permits (PrDP's) Issued per Province									
Category	GA	KZ	WC	EC	FS	MP	NW	LI	NC	RSA
G	1 531	1 698	1 482	692	798	886	369	738	333	8 527
P G	273 357	180 357	148 008	84 967	62 730	100 111	51 544	104 919	24 063	1 030 056
D G	33	10	19	16	22	10	10	44	2	166
D P G	14 045	10 871	4 355	2 377	3 125	3 524	1 285	1 969	751	42 302
Total	288 966	192 936	153 864	88 052	66 675	104 531	53 208	107 670	25 149	1 081 051
Dec 2019										
Category	GA	KZ	WC	EC	FS	MP	NW	LI	NC	RSA
G	1 475	1 487	1 393	668	798	763	377	677	342	7 980
P G	284 725	185 606	155 226	89 884	63 604	104 330	52 646	106 455	24 719	1 067 195
D G	20	10	15	15	15	5	16	31	4	131
D P G	14 926	11 387	4 606	2 548	3 203	3 774	1 294	2 047	769	44 554
Total	301 146	198 490	161 240	93 115	67 620	108 872	54 333	109 210	25 834	1 119 860
% Change										
Category	GA	KZ	WC	EC	FS	MP	NW	LI	NC	RSA
G	-3,66	-12,43	-6,01	-3,47	0,00	-13,88	2,17	-8,27	2,70	-6,41
P G	4,16	2,91	4,88	5,79	1,39	4,21	2,14	1,46	2,73	3,61
D G	-39,39	0,00	-21,05	-6,25	-31,82	-50,00	60,00	-29,55	100,00	-21,08
D P G	6,27	4,75	5,76	7,19	2,50	7,09	0,70	3,96	2,40	5,32
Total	4,22	2,88	4,79	5,75	1,42	4,15	2,11	1,43	2,72	3,59

Professional Driving Permits (PrDPs)

G : Goods

P : Passengers

D : Dangerous goods



Road Traffic
Management Corporation

Road Traffic Management Corporation
Eco Origin Office Park, Block F
349 Witch-Hazel Street
Highveld Ext 79
Tell: 012 999 5200

Want to know more about the RTMC - visit www.rtmc.co.za